



Stedman®
collection

COLLECTION 2022



WE  CLOTHES



CONTENT

Stedman® 2022	4
About Us	6
Sustainability	8
News	16
Product Catalogue	22
T-shirts & more	22
Sweats	64
Sports	76
Jackets & Fleece	100
Last Chance	116
Fabrics, Colours & Sizes	130
Print & Embroidery	136
Index	138



stedman.eu/collection

A solid blue square located to the left of the main title.

STEDMAN[®] 2022

Since 1953, the Stedman[®] brand has stood for reliable product quality, excellent value for money and ethically responsible manufacturing conditions.



Our 2022 collection includes a wide range of products for men, women and children, from simple T-shirts and sweatshirts in popular colours to functional sports and versatile outdoor clothing.

We are proud that we have been able to focus increasingly on environmentally friendly materials in recent years and are convinced that this change will have a lasting positive impact on the textile industry. Only by acting responsibly do we have the opportunity to create a better future for people and nature.

stedman.eu/history

ABOUT US

Much has changed since 1930. One thing though has been a constant in all these years: Our commitment to quality and comfort.

Stedman[®] begins its textile business with cotton handkerchiefs in 1930. In 1939, the handkerchief operation is restructured during World War II to manufacture T-shirts for the United States Navy. In 1950 we are producing a full line of lightweight underwear for men and boys. A knit sportswear line

is introduced in 1953. These T-shirts are made of durable yet soft and comfortable combed cotton. With two plants in production, and employing approximately 200 people, our company grows into one of the best-known manufacturers of men's quality T-shirts in the country.

Asheboro, North Carolina

Birth place of the Stedman Manufacturing Company



1930 in a small town in North Carolina. Sulon B. Stedman and his father, William David Stedman, form the Stedman Manufacturing Company.

In 1968 we own six production plants. Stedman® is a serious underwear and sportswear firm.

Two years later Stedman® products are distributed from coast to coast and around the world. World-wide sales of Stedman® underwear and sportswear products are handled in the Stedman® New York office. Operating warehouses are located in Asheboro, Texas, Oakland, Los Angeles and Honolulu.

The Stedman Manufacturing Company is a tremendous success. At the age of 60 William David Stedman decides to retire and sell his textile firm to the Sara Lee Corporation in 1980.

Four basic products are introduced at the European market launch in Paris on September 18, 2001: Classic-T, Junior Classic-T, Comfort-T and Polo. We are proud to say that these styles are still considered best-sellers in our collection to this day.

Our product portfolio grows quickly as awareness of the brand increases.

In 2006 Sara Lee sells

its branded apparel business to its former subsidiary Hanesbrands. Hanesbrands decides to pull their brand Hanes® out of the European markets in 2014 but Stedman® remains in Europe.

Today Stedman® is an independent company providing top-quality promotional clothing at attractive prices. Based in Aachen, Germany, and with warehouses in Ghent, Belgium, and Zagreb, Croatia, Stedman® enjoys a strong market presence in 40 countries.

The current collection comprises 136 styles for men, women, children and toddlers: from T-shirts, polo shirts, sweatshirts and jackets up to fashionable sportswear.

We are focussing on sustainable production and growing our organic and recycled product ranges. So far we have recycled over 1.5 million plastic bottles for our sustainable sports T-shirts, sweatshirts and sweatpants. And by using organic cotton, we have been able to save more than 7.5 billion litres of water - the equivalent of over 50 million bathtubs.

Read more about our sustainable production measures on pages 8-15.

Stedman® Underwear in 1950



Stedman® Comfort-T in 1960



**“There is no such thing as ‘away’.
When we throw anything away it must go somewhere.”**

Annie Leonard

stedman.eu/sustainability

WALK THE WALK

Sustainability focuses on meeting the needs of the present without compromising the ability of future generations to meet their needs. We have to avoid the depletion of natural resources in order to maintain an ecological balance.

We pride ourselves in our ethical ways of business and believe it is our part as global citizens to contribute to sustainable and ethically-minded production for a minimal environmental impact.



RECYCLED MATERIAL

Our sustainable polyester made from recycled plastic bottles offers high-quality characteristics but with a smaller environmental footprint, keeping plastics from going to landfills and our oceans.

AMFORI

Member of amfori, the leading global business association for open and sustainable trade. We improve the social performance of our supply chain via amfori BSCI.

ORGANIC CONTENT STANDARD

Our organic styles are made of 100% OCS-certified organic ring-spun cotton; certified by Control Union Certifications (CU 819645).

PETA-APPROVED VEGAN

We do not use animal products. Our clothing & accessories are made of vegan alternatives to animal-derived materials such as leather, fur, silk, feathers, or bone.

OEKO-TEX®

Our textile articles and components have been tested for harmful substances and are therefore harmless for human health, assuring high product safety. Currently not certified, but produced according to the same strict specifications: Biker and Quilted Jackets.

STEDMAN® PROOFED QUALITY

All our articles are subject to strict quality controls. With our own quality management team on site, we ensure that our high demands on material and product properties are always met.



stedman.eu/organic

ORGANIC



Our super soft organic T-shirts are made of 100% OCS-certified organic cotton, grown without the use of toxic and persistent pesticides, herbicides or other chemical fertilizers. A sustainable, eco-friendly cultivation contributes to the protection and conservation of our water resources, to the regeneration and improvement of soil fertility and to the protection of our planet in general. Our organic

styles are environmentally friendly, fashionable and absolutely soft on the skin. These styles offer all the advantages of a classic promotional T-shirt and at the same time the good feeling of having made a small contribution to environmental protection.

Organic Stedman[®] styles can be found on pages: 30-31, 33 & 43

For more information on our organic collection please visit our website:

stedman.eu/organic



What is Organic Cotton?

Organic cotton is produced and certified according to strict guidelines and standards of organic farming. The cultivation of organic cotton preserves the health of the soil, nature and people, as only natural means and sustainable methods are used instead of artificial fertilizers and pesticides. The use of toxic chemicals and genetically modified organisms (e.g. seeds) is prohibited. Instead, the cultivation of organic cotton combines tradition, innovation and science to benefit the environment and promote a good quality of life for all.

46% fewer CO₂ emissions

91% less surface and groundwater use

62% less energy consumption

70% less acidification of land and water

By using organic cotton, we have so far been able to save more than **7.5 billion litres of water** - the equivalent of over **50 million bathtubs**.



Our Wildlife Is At Risk

By 2050 it is estimated that there will be more plastic than fish. We need to start protecting our wildlife. It is time to make a change! Small changes lead to a big impact.



Stedman[®]
collection

For more information on our recycled collection please visit our website:

stedman.eu/recycled



stedman.eu/recycled

RECYCLED



So far we have recycled 1.5 million plastic bottles.
Let's save our oceans together!

Every year more than 8 million metric tons of plastic waste end up in our oceans killing millions of seabirds and other animals. 1 million plastic bottles are bought worldwide every minute. Only 9% of the plastic ever made has been recycled. Our sustainable polyester made from recycled plastic bottles offers the same high-quality characteristics as conventional polyester but with a smaller environmental footprint. Furthermore, the production of

recycled polyester requires far less energy, causes significantly fewer CO₂ emissions, and helps to keep plastic waste from going to landfills and our oceans.

You can find more details on Stedman®'s recycling process on page 94.

Recycled Stedman® styles can be found on pages: 70-73 & 90-95



stedman.eu/sustainability

ECO-FRIENDLY PRODUCTS

Our organic and recycled styles can be found throughout this catalogue in various product categories.

Our road to sustainability began in 2015 when we introduced 5 styles into the market made of certified organic cotton. Today you can find 10 organic styles for men, women and children and 11 styles made

from recycled plastic bottles in the Stedman[®] collection. We want to help you go green whether it is for the environment, our children or simply for your conscience. Together we can make a change.



ST2020, p. 30



ST2620, p. 31



ST9200, p. 33



ST9300, p. 33

**ECO-FRIENDLY
STYLES IN
2022**



ST2220, p. 31



ST9220, p. 43



ST9320, p. 43



ST8830, p. 90



ST8930, p. 90



ST8840, p. 93



ST8940, p. 93



ST8850, p. 92



ST8950, p. 92



ST5840, p. 95



ST5940, p. 95



ST5630, p. 70 & ST5650, p. 73

stedman.eu/news

NEW STYLES

Stedman[®] Lux and Stedman[®] Lux Fitted

We listen to our customers and appreciate their input to create a product that not only meets our market's highest demands but a product that we think can become a customer favourite while falling in line with our core values. Our most recent collaboration is Stedman[®] Lux.



For more information on our new styles and colours please visit our website:

stedman.eu/news

ST7000 LUX convinces with

180 ^{g/m²} _{com}

PREMIUM

grammage and luxurious quality
ring-spun combed cotton

100 %

RING-SPUN COMBED
COTTON...

...MELANGE
COLOURS
AS WELL

14

MATCHING
COLOURS

for Lux & Lux Fitted

Soft to the skin, offering a surface perfectly suited **for all kinds of printing techniques:** especially for Direct-to-Garment-Printing (DTG).



ST7000 LUX
for men and women
in new colour **Dark Grey Heather**



ST7600 LUX FITTED
for women
in new colour **Dark Denim Heather**



**PREMIUM
WOVEN
SIZE LABEL**
in the collar

**TEAR-AWAY
LABEL**
in the side seam

**SIDE
SEAMS**
guarantee a perfect fit
and a premium look



ST7000

STEDMANLUX

This T-shirt for men and women features a modern shape with side seams for an advanced fit, 14 best-selling colours, and an outstanding size range from **XS to 5XL**.



ST7600

STEDMANLUX FITTED

The partner product for women with a more feminine silhouette comes in 14 colours and is available from **XS to 3XL**.

Our all-time bestseller

CLASSIC

The Stedman[®] Classic-T collection is made for **the entire family**. Our high-quality ring-spun cotton styles are significantly **soft, durable and longlasting**.



8

STYLES

also in OCS-certified organic ring-spun cotton



Classic-T Crew Neck



Classic-T Fitted



Classic-T V-neck



Classic-T Organic



Classic Tank Top



Classic-T Long Sleeve



Classic Polo



Classic Polo Long Sleeve

17

SIZES

from 3XS to 5XL

Classic-T offers a comfortable basic shape and a large colour palette. Sizes for **adults range from XXS to 5XL. Kids and toddlers are covered from 3XS to XL.** This popular bestseller is not only available in many fits and styles, but also in OCS-certified organic ring-spun cotton.

Stedman® Classics can be found on pages: 28-32, 48, 50, 52, 58 & 59

25

MATCHING COLOURS

for men and women
(**Classic-T** and
Classic-T Fitted)





A vertical, blurred photograph of a city street at night, showing tall buildings and streetlights, positioned on the left side of the page.

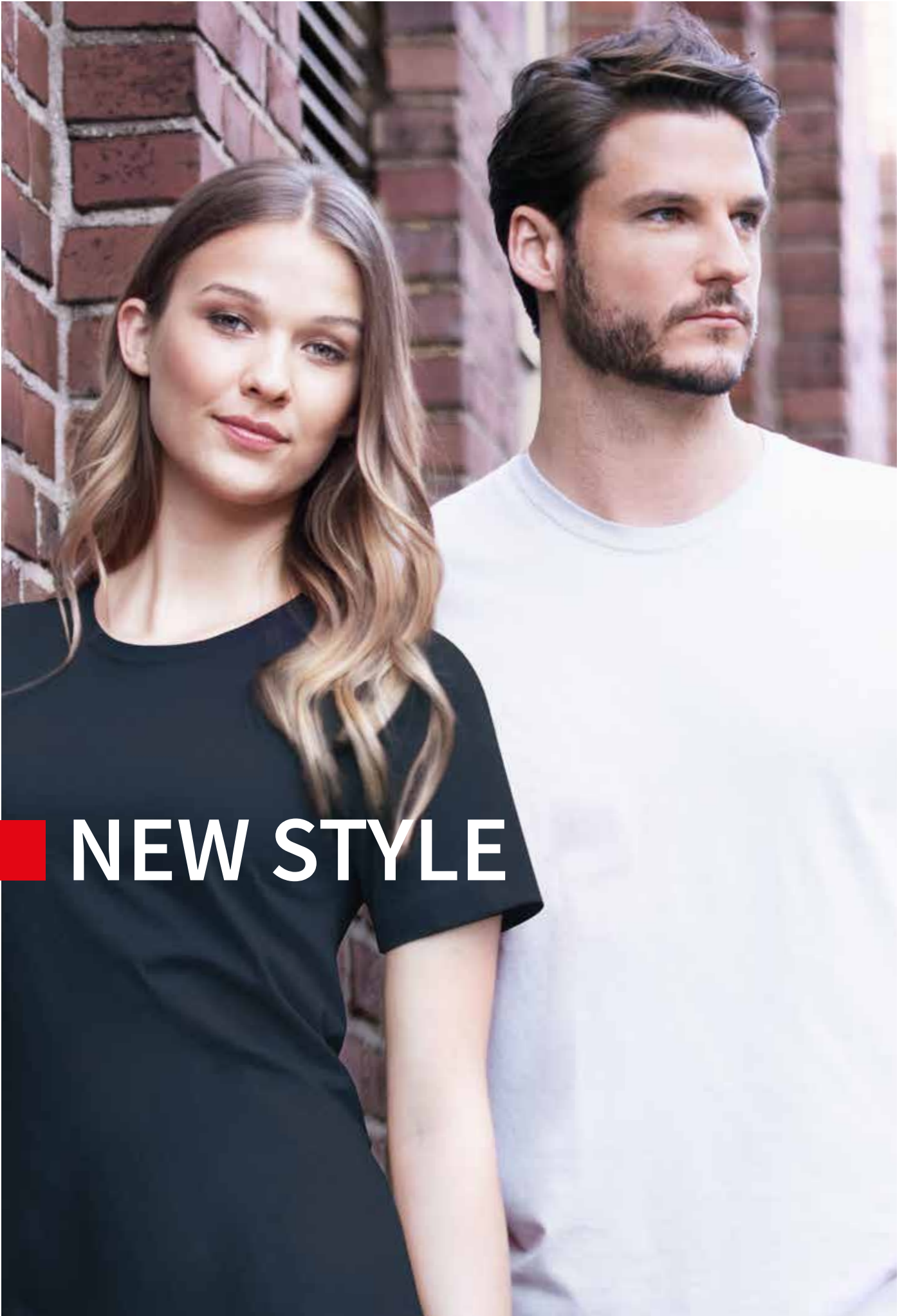
stedman.eu/t-shirts

T-SHIRTS & MORE

A solid red square located on the right side of the page, partially overlapping the main text area.

With decades of experience in the promotional market, Stedman® is known to offer styles in thoroughly thought out shapes and colours that meet their customers' needs: T-shirts, polo shirts, long sleeves and more, made of perfectly printable, high-quality fabrics.

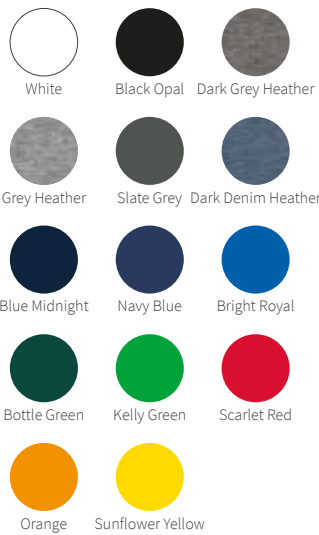
The newest addition to the Stedman® collection: **Lux** for men and women and **Lux Fitted** for women come in 14 best-selling colours and an outstanding size range.



NEW STYLE



180 g/m²
Normal Fit



ST7000 MEN & WOMEN

Lux

XS - S - M - L - XL - XXL - 3XL - 4XL - 5XL

100% ring-spun combed cotton; single jersey

- ✓ LUXURIOUS QUALITY RING-SPUN COMBED COTTON
- ✓ UNISEX STYLE - GREAT FIT FOR MEN & WOMEN
- ✓ AVAILABLE IN 14 COLOURS
- ✓ PREMIUM WOVEN SIZE LABEL IN THE COLLAR
- ✓ TEAR-AWAY LABEL IN THE SIDE SEAM

Sizes 4-5XL only in: White, Black Opal, Grey Heather & Navy Blue



UNISEX



BODY FIT p. 27



NEW STYLE



ST7600 WOMEN
Lux Fitted

XS - S - M - L - XL - XXL - 3XL

100% ring-spun combed cotton; single jersey

- ✓ LUXURIOUS QUALITY RING-SPUN COMBED COTTON
- ✓ FEMININE SHAPE
- ✓ AVAILABLE IN 14 COLOURS
- ✓ PREMIUM WOVEN SIZE LABEL IN THE COLLAR
- ✓ TEAR-AWAY LABEL IN THE SIDE SEAM

Size 3XL only in: White, Black Opal, Grey Heather & Navy Blue



NORMAL FIT p. 25



155 ^{g/m²}
Normal Fit



ST2000 MEN & WOMEN
Classic-T

XXS - XS - S - M - L - XL - XXL - 3XL - 4XL - 5XL

100% ring-spun cotton; single jersey
(Grey Heather: 85% cotton, 15% viscose)

- ✓ UNISEX STYLE - GREAT FIT FOR MEN & WOMEN
- ✓ CLASSIC BESTSELLER
- ✓ HIGH-QUALITY RING-SPUN COTTON

Sizes 4-5XL only in: White, Black Opal, Ash, Grey Heather, Blue Midnight, Navy Blue, Bright Royal & Scarlet Red



CLASSIC UNISEX ORGANIC p. 30 · BODY FIT p. 32 · V-NECK p. 48 · LONG SLEEVE p. 52



NEW COLOURS

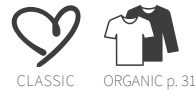
ST2600 WOMEN
Classic-T Fitted

XS - S - M - L - XL - XXL - 3XL

100% ring-spun cotton; single jersey
 (Grey Heather: 85% cotton, 15% viscose)

- ✓ SIDE SEAMS
- ✓ CLASSIC BESTSELLER
- ✓ HIGH-QUALITY RING-SPUN COTTON

Size 3XL only in: White, Black Opal, Navy Blue & Scarlet Red



155 g/m²
 Body Fit



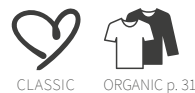
ST2200 CHILDREN
Classic-T Kids

EU 3XS - XXS - XS - S - M - L - XL
 AGE 1-2 3-4 5-6 7-8 9-10 11-12 12-13
 CM 86-92 98-104 110-116 122-128 134-140 146-152 158-164

100% ring-spun cotton; single jersey
 (Grey Heather: 85% cotton, 15% viscose)

- ✓ LARGE SIZE RANGE FROM TODDLERS TO TEENAGERS
- ✓ CLASSIC BESTSELLER
- ✓ HIGH-QUALITY RING-SPUN COTTON

Sizes 3-2XS only in: White, Black Opal, Navy Blue, Bright Royal, Light Blue, Scarlet Red & Orange



155 g/m²
 Normal Fit



145 g/m²
Normal Fit



White



Black Opal



Grey Heather



Real Grey



Bright Royal



Navy Blue



Scarlet Red



Kiwi Green

ST2020 MEN & WOMEN
Classic-T Organic

XXS - XS - S - M - L - XL - XXL - 3XL - 4XL - 5XL

100% OCS-certified organic ring-spun cotton; single jersey
(Grey Heather: 85% cotton, 15% viscose)

- ✓ ECO-FRIENDLY COTTON (OCS-CERTIFIED)
- ✓ CLASSIC BESTSELLER
- ✓ UNISEX STYLE - GREAT FIT FOR MEN & WOMEN

Sizes 4-5XL only in: White, Black Opal, Bright Royal, Grey Heather, Navy Blue & Scarlet Red



ORGANIC



UNISEX



CLASSIC



NON-ORGANIC p. 28

ST2620 WOMEN
Classic-T Organic Fitted

XS - S - M - L - XL

100% OCS-certified organic
 ring-spun cotton; single jersey
 (Grey Heather: 85% cotton, 15% viscose)

- ✓ SIDE SEAMS
- ✓ ECO-FRIENDLY COTTON (OCS-CERTIFIED)
- ✓ CLASSIC BESTSELLER



SUSTAINABLE

- White
- Black Opal
- Grey Heather
- Real Grey
- Bright Royal
- Navy Blue
- Scarlet Red
- Kiwi Green

145 g/m²
 Body Fit

ST2220 CHILDREN
Classic-T Organic Kids

	XS	S	M	L	XL
EU AGE	5-6	7-8	9-10	11-12	12-13
CM	110-116	122-128	134-140	146-152	158-164

100% OCS-certified organic
 ring-spun cotton; single jersey
 (Grey Heather: 85% cotton, 15% viscose)

- ✓ ECO-FRIENDLY COTTON (OCS-CERTIFIED)
- ✓ CLASSIC BESTSELLER
- ✓ DURABLE FABRIC



SUSTAINABLE

- White
- Black Opal
- Grey Heather
- Real Grey
- Bright Royal
- Navy Blue
- Scarlet Red
- Kiwi Green

145 g/m²
 Normal Fit

NEW COLOUR



White



Black Opal



Grey Heather



Real Grey



Deep Berry



Bright Royal



Navy Blue



Scarlet Red



Kiwi Green



155 g/m²
Body Fit

ST2010 MEN
Classic-T Fitted

S - M - L - XL - XXL

100% ring-spun cotton; single jersey
(Grey Heather: 85% cotton, 15% viscose)

- ✓ BODY-FIT SHAPE
- ✓ CLASSIC BESTSELLER
- ✓ HIGH-QUALITY RING-SPUN COTTON



CLASSIC



NORMAL FIT p. 28



155 g/m²
Normal Fit

White Black Opal

Soft Grey Denim Blue

Pepper Red Frosted Blue

Winter White Indian Yellow **40%**

Earth Green **40%**

ST9200 MEN & ST9300 WOMEN
James & Janet Organic Crew Neck

MEN: S - M - L - XL - XXL
WOMEN: S - M - L - XL

100% OCS-certified organic ring-spun combed cotton; single jersey

- ✓ ECO-FRIENDLY COMBED COTTON (OCS-CERTIFIED)
- ✓ SIDE SEAMS
- ✓ NO LABEL IN COLLAR







185 g/m²
Normal Fit



ST2100 MEN & ST2160 WOMEN

Comfort-T 185

MEN: **S - M - L - XL - XXL - 3XL - 4XL - 5XL**

WOMEN: **S - M - L - XL - XXL**

100% ring-spun cotton; single jersey
(Grey Heather: 85% cotton, 15% viscose)

- ✓ **HEAVYWEIGHT RING-SPUN COTTON**
- ✓ **DURABLE FABRIC**
- ✓ **REGULAR SHAPE**

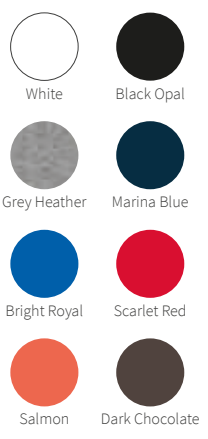
Men's sizes 4-5XL only in: White, Black Opal & Navy Blue



LONG SLEEVE p. 52



170 g/m²
Normal Fit



ST9630 MEN & ST9730 WOMEN
Clive & Claire Relaxed

MEN: **S - M - L - XL - XXL**
WOMEN: **XS - S - M - L - XL**

95% ring-spun combed cotton, 5% elastane; single jersey “full feeder”
(Grey Heather: 82% cotton, 14% viscose, 4% elastane)

- ✓ **NORMAL FIT**
- ✓ **STRETCHY, COMBED COTTON WITH ELASTANE**
- ✓ **NO LABEL IN COLLAR**



170 g/m²
Body Fit



ST9600 MEN & ST9700 WOMEN

Clive & Claire Crew Neck

MEN: **S - M - L - XL - XXL**

WOMEN: **XS - S - M - L - XL**

95% ring-spun combed cotton, 5% elastane; single jersey “full feeder”
(Grey Heather: 82% cotton, 14% viscose, 4% elastane)

- ✓ **BODY FIT**
- ✓ **STRETCHY, COMBED COTTON WITH ELASTANE**
- ✓ **NO LABEL IN COLLAR**

Men's size XXL only in: White, Black Opal, Soft Grey, Grey Heather, Marina Blue, Denim Blue, Salmon, Dark Chocolate & Slate Grey
Women's size XS only in: White, Black Opal & Marina Blue



V-NECK p. 47 · LONG SLEEVE p. 55



White



Cream White



Black Opal



Grey Heather



Slate Grey



Marina Blue



King Blue



Hawaii Blue



Deep Lilac



Crimson Red



Pumpkin



Daisy Yellow



Green Flash



Military Green

160 g/m²
Normal Fit



ST9000 MEN
Ben Crew Neck

S - M - L - XL - XXL - 3XL

100% ring-spun cotton; single jersey
(Grey Heather: 85% cotton, 15% viscose)

- ✓ PREMIUM RING-SPUN COTTON
- ✓ REGULAR CUT WITH RIB COLLAR
- ✓ SIDE SEAMS
- ✓ NO LABEL IN COLLAR

Size 3XL only in: White, Black Opal & Marina Blue



V-NECK p. 46



ST9020 MEN

Morgan Crew Neck

S - M - L - XL - XXL

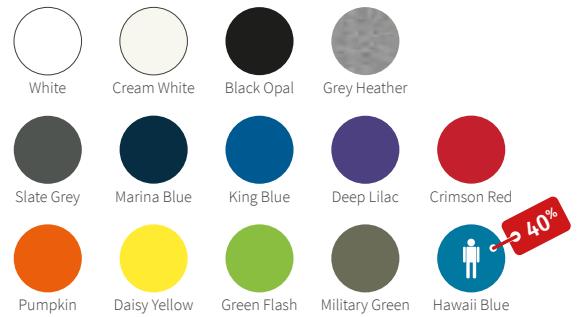
100% ring-spun cotton; single jersey
(Grey Heather: 85% cotton, 15% viscose)

- ✓ PREMIUM RING-SPUN COTTON
- ✓ BODY-FIT CUT WITH RIB COLLAR
- ✓ SIDE SEAMS
- ✓ NO LABEL IN COLLAR

Size XXL only in: White, Black Opal, Crimson Red, Grey Heather, King Blue, Marina Blue, Military Green & Slate Grey



LONG SLEEVE p. 53



ST9120 WOMEN

Megan Crew Neck

XS - S - M - L - XL

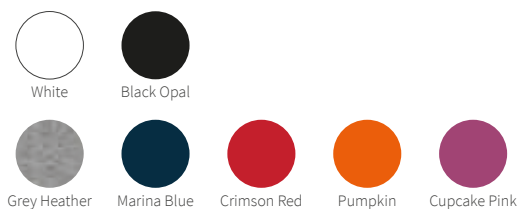
100% ring-spun combed cotton; single jersey
(Grey Heather: 85% cotton, 15% viscose)

- ✓ HIGH-QUALITY COMBED COTTON
- ✓ BODY-FIT CUT WITH SLIM RIB COLLAR
- ✓ NO LABEL IN COLLAR

Size XS only in: White, Black Opal & Marina Blue



V-NECK p. 46





MEN **105** g/m²
Normal Fit



WOMEN **105** g/m²
Body Fit



White



Black Opal



Slate Grey



Marina Blue



Crimson Red

ST9100 MEN & ST9110 WOMEN

Finest Cotton-T

S - M - L - XL

100% ring-spun combed cotton; single jersey

- ✓ FINE, SOFT & STRETCHY COMBED COTTON
- ✓ ROLLED SELF-FABRIC COLLAR
- ✓ NO LABEL IN COLLAR



140 g/m²
Normal Fit



White



Black Opal



Powder Grey



Crimson Red



Slate Grey



Powder Blue



True Blue

ST9400 MEN & ST9500 WOMEN

Shawn & Sharon Slub Crew Neck

MEN: S - M - L - XL - XXL

WOMEN: S - M - L - XL

100% ring-spun cotton, slub yarn; single jersey

- ✓ SLUB YARN FOR A TEXTURISED LOOK
- ✓ SLIM, MODERN COLLAR
- ✓ NO LABEL IN COLLAR



V-NECK p. 49



140 g/m²
Normal Fit



White



Black Opal



Slate Grey

ST9430 MEN & ST9530 WOMEN

Shawn & Sharon Henley T-shirt

MEN: S - M - L - XL - XXL

WOMEN: S - M - L - XL

100% ring-spun cotton, slub yarn; single jersey

- ✓ SLUB YARN FOR A TEXTURED LOOK
- ✓ METAL BUTTONS
- ✓ NO LABEL IN COLLAR



LONG SLEEVE p. 56



130 g/m²
Normal Fit



White



Black Opal



Slate Grey

ST9220 MEN & ST9320 WOMEN

Slub Organic

MEN: S - M - L - XL - XXL

WOMEN: S - M - L - XL

100% OCS-certified organic ring-spun cotton, slub yarn; single jersey

- ✓ ECO-FRIENDLY COTTON (OCS-CERTIFIED)
- ✓ SLUB YARN FOR A TEXTURISED LOOK
- ✓ NO LABEL IN COLLAR



ORGANIC



140 g/m²
Oversized Fit



Vintage Grey



Vintage Blue



Vintage Rose



Vintage Brown

ST9850 MEN & ST9950 WOMEN

David & Daisy Oversized

MEN: S - M - L - XL - XXL

WOMEN: S - M - L - XL

65% polyester, 35% viscose; melange, single jersey

- ✓ SUPER SOFT AND SILKY FABRIC WITH VISCOSE
- ✓ MODERN OVERSIZED FIT
- ✓ RAW EDGE COLLAR
- ✓ NO LABEL IN COLLAR



White



Black Opal

170 g/m²
Body Fit

ST9690 MEN

Dean Deep V-neck

S - M - L - XL - XXL

95% ring-spun combed cotton, 5% elastane;
single jersey "full feeder"

(Grey Heather: 82% cotton, 14% viscose, 4% elastane)

- ✓ STRETCHY, COMBED COTTON WITH ELASTANE
- ✓ PERFECT AS UNDERSHIRT
- ✓ BODY-FIT SHAPE
- ✓ NO LABEL IN COLLAR



160 g/m²
Normal Fit

ST9010 MEN
Ben V-neck

S - M - L - XL - XXL

100% ring-spun cotton; single jersey
(Grey Heather: 85% cotton, 15% viscose)

- ✓ PREMIUM RING-SPUN COTTON
- ✓ REGULAR CUT WITH RIB COLLAR
- ✓ NO LABEL IN COLLAR



CREW NECK p. 38



145 g/m²
Body Fit

ST9130 WOMEN
Megan V-neck

S - M - L - XL

100% ring-spun combed cotton; single jersey
(Grey Heather: 85% cotton, 15% viscose)

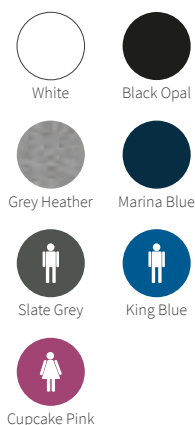
- ✓ HIGH-QUALITY COMBED COTTON
- ✓ BODY-FIT CUT WITH SLIM RIB COLLAR
- ✓ NO LABEL IN COLLAR



CREW NECK p. 39



170 g/m²
Body Fit



ST9610 MEN & ST9710 WOMEN
Clive & Claire V-neck

MEN: **S - M - L - XL - XXL**
WOMEN: **S - M - L - XL**

95% ring-spun combed cotton, 5% elastane; single jersey “full feeder”
(Grey Heather: 82% cotton, 14% viscose, 4% elastane)

- ✓ **STRETCHY, COMBED COTTON WITH ELASTANE**
- ✓ **BODY-FIT SHAPE**
- ✓ **NO LABEL IN COLLAR**

Men's size XXL only in: White, Black Opal, Grey Heather & Slate Grey



CREW NECK p. 37 · LONG SLEEVE p. 55



155 g/m²
Normal Fit



ST2300 MEN & ST2700 WOMEN
Classic-T V-neck

S - M - L - XL - XXL

100% ring-spun cotton; single jersey
(Grey Heather: 85% cotton, 15% viscose)

- ✓ CLASSIC BESTSELLER
- ✓ HIGH-QUALITY RING-SPUN COTTON
- ✓ NORMAL FIT

Women's size XXL only in: White, Black Opal, Navy Blue & Scarlet Red



CLASSIC



CREW NECK p. 28 · LONG SLEEVE p. 52



140 g/m²
Normal Fit



White



Black Opal



Crimson Red



Bahama Green



Slate Grey



True Blue



True Blue

ST9410 MEN & ST9510 WOMEN

Shawn & Sharon Slub V-neck

MEN: S - M - L - XL - XXL

WOMEN: S - M - L - XL

100% ring-spun cotton, slub yarn; single jersey

- ✓ SLUB YARN FOR A TEXTURISED LOOK
- ✓ SLIM, MODERN COLLAR
- ✓ NO LABEL IN COLLAR



CREW NECK p. 41



155 g/m²
Normal Fit



White



Black Opal

ST2800 MEN & ST2900 WOMEN

Classic Tank Top

MEN: S - M - L - XL - XXL

WOMEN: S - M - L - XL

100% ring-spun cotton; single jersey

- ✓ HIGH-QUALITY RING-SPUN COTTON
- ✓ REGULAR SHAPE
- ✓ COLLAR WITH RIB BINDING



CLASSIC



White



Black Opal



Grey Heather

160 g/m²
Body Fit

ST2810 MEN
Tank Top

S - M - L - XL - XXL

100% ring-spun cotton; single jersey
(Grey Heather: 85% cotton, 15% viscose)

- ✓ PREMIUM RING-SPUN COTTON
- ✓ MODERN, BODY-FIT SHAPE
- ✓ NO LABEL IN COLLAR
- ✓ TEAR-AWAY LABEL IN SIDE SEAM



White



Black Opal



Grey Heather



Blue Midnight



Navy Blue



Bright Royal



Scarlet Red



155 $\frac{g}{m^2}$
Normal Fit

ST2500 MEN

Classic-T Long Sleeve

S - M - L - XL - XXL

100% ring-spun cotton; single jersey
(Grey Heather: 85% cotton, 15% viscose)

- ✓ CLASSIC BESTSELLER
- ✓ HIGH-QUALITY RING-SPUN COTTON
- ✓ REGULAR SHAPE



CLASSIC



SHORT SLEEVE CREW NECK p. 28
SHORT SLEEVE V-NECK p. 48



White



Black Opal



Grey Heather



Navy Blue



185 $\frac{g}{m^2}$
Normal Fit

ST2130 MEN

Comfort-T 185 Long Sleeve

S - M - L - XL - XXL

100% ring-spun cotton; single jersey
(Grey Heather: 85% cotton, 15% viscose)

- ✓ DURABLE FABRIC
- ✓ REGULAR SHAPE
- ✓ HEAVYWEIGHT RING-SPUN COTTON



SHORT SLEEVE p. 35



White



Black Opal



Slate Grey



Marina Blue

160 g/m²
Body Fit

ST9040 MEN
Morgan Long Sleeve

S - M - L - XL

100% ring-spun cotton; single jersey

- ✓ PREMIUM RING-SPUN COTTON
- ✓ BODY-FIT CUT WITH RIB COLLAR
- ✓ NO LABEL IN COLLAR



SHORT SLEEVE p. 39



210 ST/MT
Normal Fit



Light Grey
Melange



Dark Grey
Melange



Marina Blue
Melange

ST9080 MEN & ST9180 WOMEN

Knit Long Sleeve

MEN: **S - M - L - XL - XXL**

WOMEN: **S - M - L - XL**

58% polyester, 37% viscose, 5% elastane

- ✓ **SOFT KNIT FABRIC WITH VISCOSE**
- ✓ **FASHIONABLE LOOSE SHAPE**
- ✓ **NO LABEL IN COLLAR**

ST9620 MEN
Clive Long Sleeve

S - M - L - XL - XXL

**95% ring-spun combed cotton,
5% elastane; single jersey "full feeder"**
(Grey Heather: 82% cotton,
14% viscose, 4% elastane)

- ✓ **STRETCHY, COMBED COTTON
WITH ELASTANE**
- ✓ **BODY-FIT SHAPE**
- ✓ **NO LABEL IN COLLAR**



SHORT SLEEVE CREW NECK p. 37 · SHORT SLEEVE V-NECK p. 47



170 g/m²
Body Fit



White



Black Opal



Grey Heather



Slate Grey

ST9720 WOMEN
Claire V-neck Long Sleeve

S - M - L - XL

**95% ring-spun combed cotton,
5% elastane; single jersey "full feeder"**
(Grey Heather: 82% cotton,
14% viscose, 4% elastane)

- ✓ **STRETCHY, COMBED COTTON
WITH ELASTANE**
- ✓ **BODY-FIT SHAPE**
- ✓ **NO LABEL IN COLLAR**



SHORT SLEEVE CREW NECK p. 37 · SHORT SLEEVE V-NECK p. 47



170 g/m²
Body Fit



White



Black Opal



Grey Heather



Marina Blue



Cupcake Pink



140 g/m²
Normal Fit



White



Black Opal

ST9460 MEN & ST9580 WOMEN

Shawn & Sharon Henley Long Sleeve

MEN: S - M - L - XL - XXL

WOMEN: S - M - L - XL

100% ring-spun cotton, slub yarn; single jersey

- ✓ SLUB YARN FOR A TEXTURISED LOOK
- ✓ METAL BUTTONS
- ✓ NO LABEL IN COLLAR



SHORT SLEEVE p. 42





170 ^{g/m²}
Normal Fit



ST3000 MEN & ST3100 WOMEN

Polo

MEN: S - M - L - XL - XXL - 3XL - 4XL - 5XL

WOMEN: XS - S - M - L - XL - XXL

100% ring-spun cotton; single jersey, piqué look
(Grey Heather: 85% cotton, 15% viscose)

- ✓ SOFT SINGLE JERSEY COTTON WITH PIQUÉ LOOK
- ✓ RIB COLLAR
- ✓ CLASSIC BESTSELLER

Men's sizes 3-5XL only in: White, Black Opal, Blue Midnight, Bright Royal, Grey Heather, Navy Blue & Scarlet Red
Women's sizes XS & XXL only in: White, Black Opal, Blue Midnight, Bright Royal, Grey Heather, Navy Blue & Scarlet Red



CLASSIC

ST3200 CHILDREN
Polo Kids

EU	XS	S	M	L	XL
AGE	5-6	7-8	9-10	11-12	12-13
CM	110-116	122-128	134-140	146-152	158-164

**100% ring-spun cotton;
single jersey, piqué look**
(Grey Heather: 85% cotton, 15% viscose)

- ✓ **SOFT SINGLE JERSEY COTTON
WITH PIQUÉ LOOK**
- ✓ **RIB COLLAR**
- ✓ **CLASSIC BESTSELLER**



170 g/m²
Normal Fit



White



Black Opal



Grey Heather



Navy Blue



Bright Royal



Scarlet Red

ST3400 MEN
Polo Long Sleeve

S - M - L - XL - XXL

**100% ring-spun cotton;
single jersey, piqué look**
(Grey Heather: 85% cotton, 15% viscose)

- ✓ **SOFT SINGLE JERSEY COTTON
WITH PIQUÉ LOOK**
- ✓ **RIB COLLAR**
- ✓ **CLASSIC BESTSELLER**



170 g/m²
Normal Fit



White



Black Opal



Grey Heather



Navy Blue



White



Black Opal



Slate Grey



Marina Blue



True Blue



Crimson Red



Bahama Green



225 g/m²
Normal Fit

ST9050 MEN
Henry Polo

S - M - L - XL - XXL

100% ring-spun combed cotton; true piqué

- ✓ HEAVYWEIGHT PREMIUM COMBED COTTON PIQUÉ
- ✓ RIB COLLAR AND SIDE SEAM SLITS
- ✓ NO LABEL IN COLLAR

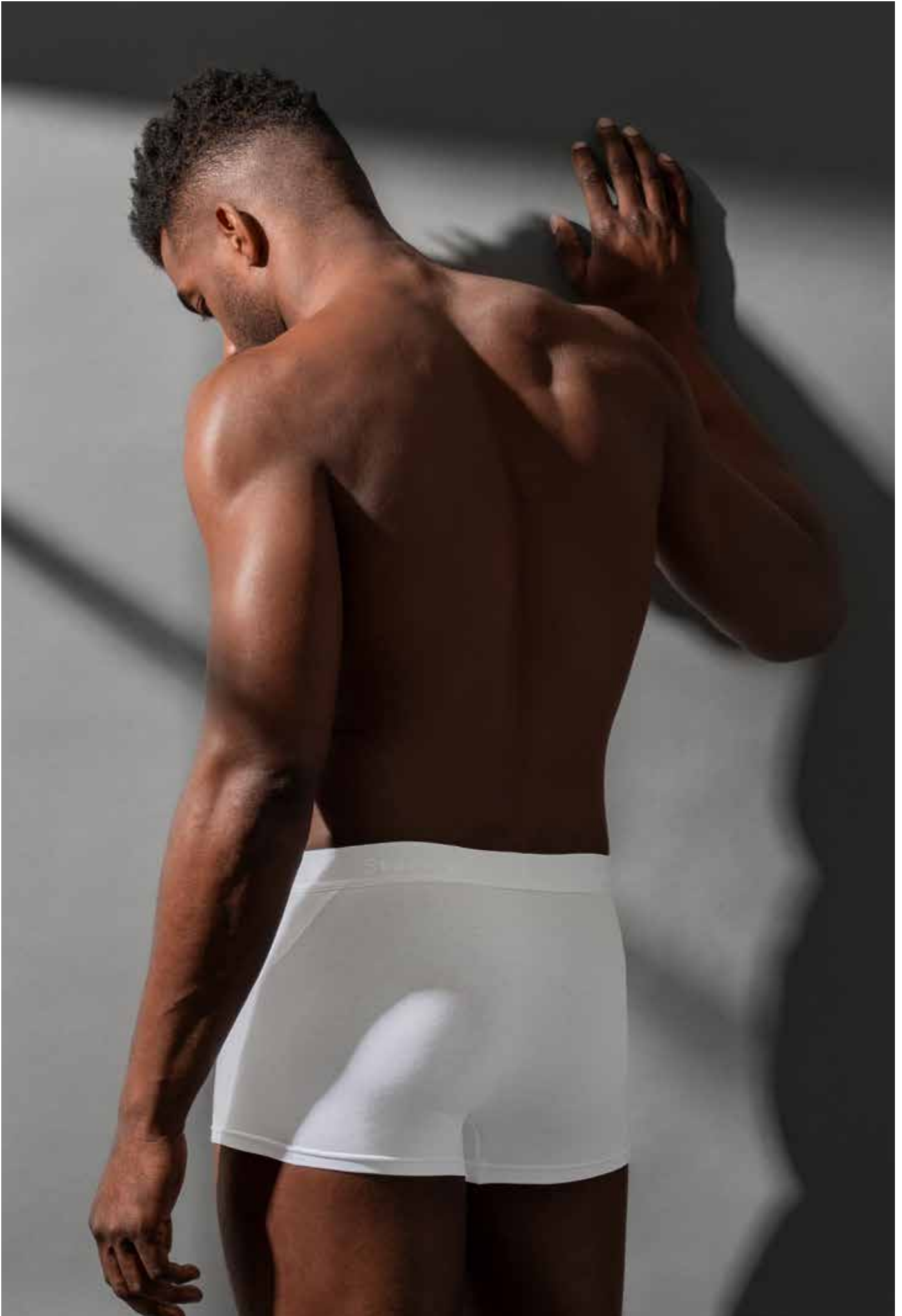


ST9060 MEN & ST9150 WOMEN
Harper & Hanna Polo

MEN: **S - M - L - XL - XXL**
 WOMEN: **S - M - L - XL**

100% ring-spun combed cotton; true piqué
 (Grey Heather: 85% cotton, 15% viscose)

- ✓ **PREMIUM, COMBED COTTON PIQUÉ**
- ✓ **RIB COLLAR**
- ✓ **NO LABEL IN COLLAR**



ST9692 MEN
Dexter Briefs

S - M - L - XL - XXL

92% ring-spun combed cotton,
8% elastane;
single jersey "full feeder"

- ✓ STRETCHY, COMBED COTTON
WITH ELASTANE
- ✓ ELASTIC WAISTBAND
- ✓ 2-PACK



White



Black Opal

ST9691 MEN
Dexter Boxers

S - M - L - XL - XXL

92% ring-spun combed cotton,
8% elastane;
single jersey "full feeder"

- ✓ STRETCHY, COMBED COTTON
WITH ELASTANE
- ✓ ELASTIC WAISTBAND
- ✓ 2-PACK



White



Black Opal



A vertical, blurred photograph of a wooden structure, possibly a fence or a wall, with vertical wooden planks. The background is out of focus, showing a light-colored ground surface.

stedman.eu/sweats

SWEATS

The perfect choice for athletic as well as casual outfits: sweatshirts, hoodies, sweat jackets and -pants, made of soft, high-quality cotton blends and recycled materials.



Black Opal



Grey Heather



Slate Grey



Blue Midnight



Hawaii Blue



Crimson Red



Kiwi Green



280 g/m²
Normal Fit

ST5620 MEN
Sweatshirt Select

S - M - L - XL - XXL

80% ring-spun cotton, 20% polyester
(Grey Heather: 70% cotton, 30% polyester)

- ✓ SOFT COTTON-BLEND
- ✓ 100% COTTON SURFACE
- ✓ MODERN, SPORTY DESIGN WITH SIDE PANELS
- ✓ BRUSHED INSIDE
- ✓ NO LABEL IN COLLAR



280 g/m²
Normal Fit



ST4000 MEN & WOMEN
Sweatshirt Classic

XS - S - M - L - XL - XXL - 3XL

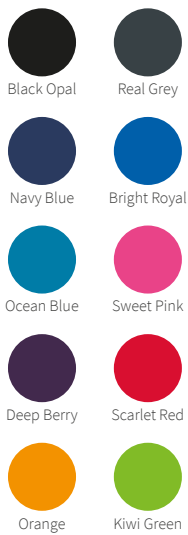
80% ring-spun cotton, 20% polyester
(Grey Heather: 70% cotton, 20% polyester, 10% viscose)

- ✓ DURABLE COTTON-BLEND
- ✓ 100% COTTON SURFACE
- ✓ BRUSHED INSIDE
- ✓ UNISEX STYLE - GREAT FIT FOR MEN & WOMEN





190 g/m²
Normal Fit



ST4200 MEN & WOMEN
Sweat Hoodie Light

XS - S - M - L - XL - XXL - 3XL - 4XL

100% ring-spun cotton

- ✓ LIGHTWEIGHT RING-SPUN COTTON
- ✓ UNISEX STYLE - GREAT FIT FOR MEN & WOMEN
- ✓ BRUSHED INSIDE
- ✓ NO LABEL IN COLLAR

Sizes 3-4XL only in: Black Opal, Real Grey & Navy Blue





280 g/m²
Normal Fit



ST4100 MEN & ST4110 WOMEN

Sweat Hoodie Classic

MEN: **S - M - L - XL - XXL - 3XL**

WOMEN: **S - M - L - XL**

80% ring-spun cotton, 20% polyester

(Grey Heather: 70% cotton, 20% polyester, 10% viscose)

- ✓ **DURABLE COTTON-BLEND**
- ✓ **100% COTTON SURFACE**
- ✓ **BRUSHED INSIDE**



280 g/m²
Normal Fit



ST5630 MEN & WOMEN

Recycled Sweat Hoodie

XS - S - M - L - XL - XXL - 3XL

80% ring-spun cotton, 20% recycled polyester
(Grey Heather: 70% cotton, 30% recycled polyester)

- ✓ ECO-FRIENDLY MATERIAL MADE FROM 6 RECYCLED PLASTIC BOTTLES
- ✓ 100% COTTON SURFACE
- ✓ NO LABEL IN COLLAR
- ✓ TEAR-AWAY LABEL IN SIDE SEAM
- ✓ BRUSHED INSIDE
- ✓ UNISEX STYLE - GREAT FIT FOR MEN & WOMEN
- ✓ FRONT SURFACE FULLY PRINTABLE DESPITE SIDE POCKETS



Black Opal



Grey Heather



Blue Midnight



RECYCLED



UNISEX







280 g/m²
Normal Fit



ST5650 MEN & WOMEN

Recycled Sweatpants

XS - S - M - L - XL - XXL

80% ring-spun cotton, 20% recycled polyester
(Grey Heather: 70% cotton, 30% recycled polyester)

- ✓ ECO-FRIENDLY MATERIAL MADE FROM 6 RECYCLED PLASTIC BOTTLES
- ✓ 100% COTTON SURFACE
- ✓ TEAR-AWAY LABEL IN WAISTBAND
- ✓ BRUSHED INSIDE
- ✓ UNISEX STYLE - GREAT FIT FOR MEN & WOMEN



Black Opal



Grey Heather



Blue Midnight



280 g/m²
Normal Fit



Black Opal



Grey Heather



Slate Grey



Blue Midnight



Crimson Red

ST5600 MEN & WOMEN

Sweat Hoodie Select

XS - S - M - L - XL - XXL - 3XL

80% ring-spun cotton, 20% polyester
(Grey Heather: 70% cotton, 30% polyester)

- ✓ SOFT COTTON-BLEND
- ✓ 100% COTTON SURFACE
- ✓ BRUSHED INSIDE
- ✓ NO LABEL IN COLLAR
- ✓ UNISEX STYLE - GREAT FIT FOR MEN & WOMEN

Sizes XS & 3XL only in: Black Opal, Grey Heather, Slate Grey & Blue Midnight





280 g/m²
Normal Fit



Black Opal



Grey Heather



Blue Midnight



Crimson Red



Deep Berry

ST5610 MEN & ST5710 WOMEN
Sweat Jacket Select

MEN: **S - M - L - XL - XXL - 3XL**

WOMEN: **S - M - L - XL**

80% ring-spun cotton, 20% polyester
(Grey Heather: 70% cotton, 30% polyester)

- ✓ **SOFT COTTON-BLEND**
- ✓ **100% COTTON SURFACE**
- ✓ **BRUSHED INSIDE**
- ✓ **MODERN DESIGN WITH ZIPPER AND METAL PULLER**
- ✓ **NO LABEL IN COLLAR**

Men's size 3XL only in: Black Opal, Blue Midnight & Grey Heather



stedman.eu/sports

SPORTS

Essentials, recycled or high-end. The Stedman® sports range has the right style for your workout needs. High-quality, moisture-wicking functional fabrics that are breathable and modern. If you prefer sustainable materials, choose one of many styles made from recycled plastic bottles.



140 g/m²
Body Fit



ST8000 MEN & ST8100 WOMEN
Sports-T

MEN: **S - M - L - XL - XXL - 3XL**
WOMEN: **XS - S - M - L - XL - XXL**

100% ACTIVE-DRY[®] polyester; interlock

- ✓ **TIGHT KNIT, ELASTIC FABRIC WITH SLEEK SURFACE**
- ✓ **QUICK-DRYING AND MOISTURE-WICKING**
- ✓ **NO LABEL IN COLLAR**

THE #1 WORKOUT T-SHIRT

Our fitted and very elastic sports T-shirts for the entire family are made of moisture-wicking, tight-knit interlock-fabric with great moisture control. An optimal surface for transfers, plastisol screen printing and sublimation printing.*



140 g/m²
Normal Fit



ST8170 CHILDREN Sports-T Kids

EU	S - M - L - XL			
AGE	7-8	9-10	11-12	12-13
CM	122-128	134-140	146-152	158-164

100% ACTIVE-DRY® polyester; interlock

- ✓ TIGHT KNIT, ELASTIC FABRIC WITH SLEEK SURFACE
- ✓ QUICK-DRYING AND MOISTURE-WICKING
- ✓ NO LABEL IN COLLAR
- ✓ TEAR-AWAY LABEL IN SIDE SEAM



140 ^{g/m²}
Body Fit



White



Black Opal



Sweet Pink



Deep Berry

ST8010 MEN & ST8110 WOMEN

Sports Top

MEN: **S - M - L - XL - XXL**

WOMEN: **S - M - L - XL**

100% ACTIVE-DRY[®] polyester; interlock

- ✓ **TIGHT KNIT, ELASTIC FABRIC WITH SLEEK SURFACE**
- ✓ **QUICK-DRYING AND MOISTURE-WICKING**
- ✓ **NO LABEL IN COLLAR**

WASHABLE AT 60° C



White

Black Opal



Slate Grey



Hawaii Blue



Pepper Red



Bahama Green

180 g/m²
Normal Fit

ST8050 MEN
Piqué Polo

S - M - L - XL - XXL

100% ACTIVE-DRY® polyester; true piqué

- ✓ HIGH-QUALITY FUNCTIONAL PIQUÉ FABRIC
- ✓ WASHABLE AT 60°C
- ✓ RIB COLLAR AND CUFFS
- ✓ NO LABEL IN COLLAR



White



Black Opal



140 g/m²
Normal Fit

ST8440 MEN

Active 140 Sleeveless

S - M - L - XL - XXL

100% ACTIVE-DRY^o polyester;
bird-eyelet mesh

- ✓ LIGHT AND STRETCHY MESH FABRIC
- ✓ GREAT MOISTURE-CONTROL
- ✓ NO LABEL IN COLLAR



White



Black Opal



140 g/m²
Normal Fit

ST8540 WOMEN

Active 140 Tank

S - M - L - XL

100% ACTIVE-DRY^o polyester;
bird-eyelet mesh

- ✓ LIGHT AND STRETCHY MESH FABRIC
- ✓ GREAT MOISTURE-CONTROL
- ✓ NO LABEL IN COLLAR



140 g/m²
Normal Fit



ST8030 MEN & ST8130 WOMEN

Active 140 Team Raglan

MEN: S - M - L - XL - XXL

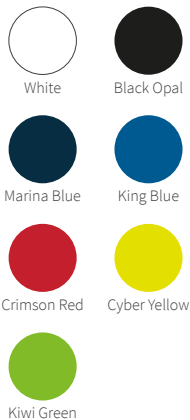
WOMEN: S - M - L - XL

100% ACTIVE-DRY® polyester; sleek mesh

- ✓ LIGHT AND STRETCHY MESH FABRIC WITH SLEEK SURFACE
- ✓ GREAT MOISTURE-CONTROL
- ✓ RAGLAN SLEEVES
- ✓ NO LABEL IN COLLAR



140 g/m²
Normal Fit



ST8410 MEN & ST8500 WOMEN

Active 140 Raglan

MEN: S - M - L - XL - XXL

WOMEN: S - M - L - XL

100% ACTIVE-DRY[®] polyester; bird-eyelet mesh

- ✓ LIGHT AND STRETCHY MESH FABRIC
- ✓ GREAT MOISTURE-CONTROL
- ✓ RAGLAN SLEEVES
- ✓ NO LABEL IN COLLAR

ST8570 CHILDREN
Active 140 Raglan Kids

EU	S	M	L	XL
AGE	7-8	9-10	11-12	12-13
CM	122-128	134-140	146-152	158-164

100% ACTIVE-DRY® polyester;
 bird-eyelet mesh

- ✓ LIGHT AND STRETCHY MESH FABRIC
- ✓ GREAT MOISTURE-CONTROL
- ✓ RAGLAN SLEEVES
- ✓ NO LABEL IN COLLAR



140 g/m²
 Normal Fit

- White
- Black Opal
- Marina Blue
- King Blue
- Crimson Red
- Cyber Yellow
- Kiwi Green

ST8400 MEN
Active 140 Crew Neck

S - M - L - XL - XXL

100% ACTIVE-DRY® polyester;
 bird-eyelet mesh

- ✓ LIGHT AND STRETCHY MESH FABRIC
- ✓ GREAT MOISTURE-CONTROL
- ✓ NO LABEL IN COLLAR



140 g/m²
 Normal Fit

- White
- Black Opal
- Marina Blue
- King Blue
- Crimson Red
- Cyber Yellow



White



Black Opal



Marina Blue



Crimson Red



140 g/m²
Normal Fit

ST8450 MEN

Active 140 Polo

S - M - L - XL - XXL

100% ACTIVE-DRY° polyester;
bird-eyelet mesh

- ✓ LIGHT AND STRETCHY MESH FABRIC
- ✓ GREAT MOISTURE-CONTROL
- ✓ RIB COLLAR
- ✓ NO LABEL IN COLLAR



White



Black Opal



Marina Blue



Crimson Red



140 g/m²
Normal Fit

ST8420 MEN

Active 140 Long Sleeve

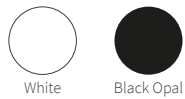
S - M - L - XL - XXL

100% ACTIVE-DRY° polyester;
bird-eyelet mesh

- ✓ LIGHT AND STRETCHY MESH FABRIC
- ✓ GREAT MOISTURE-CONTROL
- ✓ RAGLAN SLEEVES
- ✓ NO LABEL IN COLLAR



160 g/m²
Normal Fit



White

Black Opal



Crimson Red

Cyber Yellow



Kiwi Green

Cyber Orange



Hawaii Blue

ST8600 MEN & ST8700 WOMEN

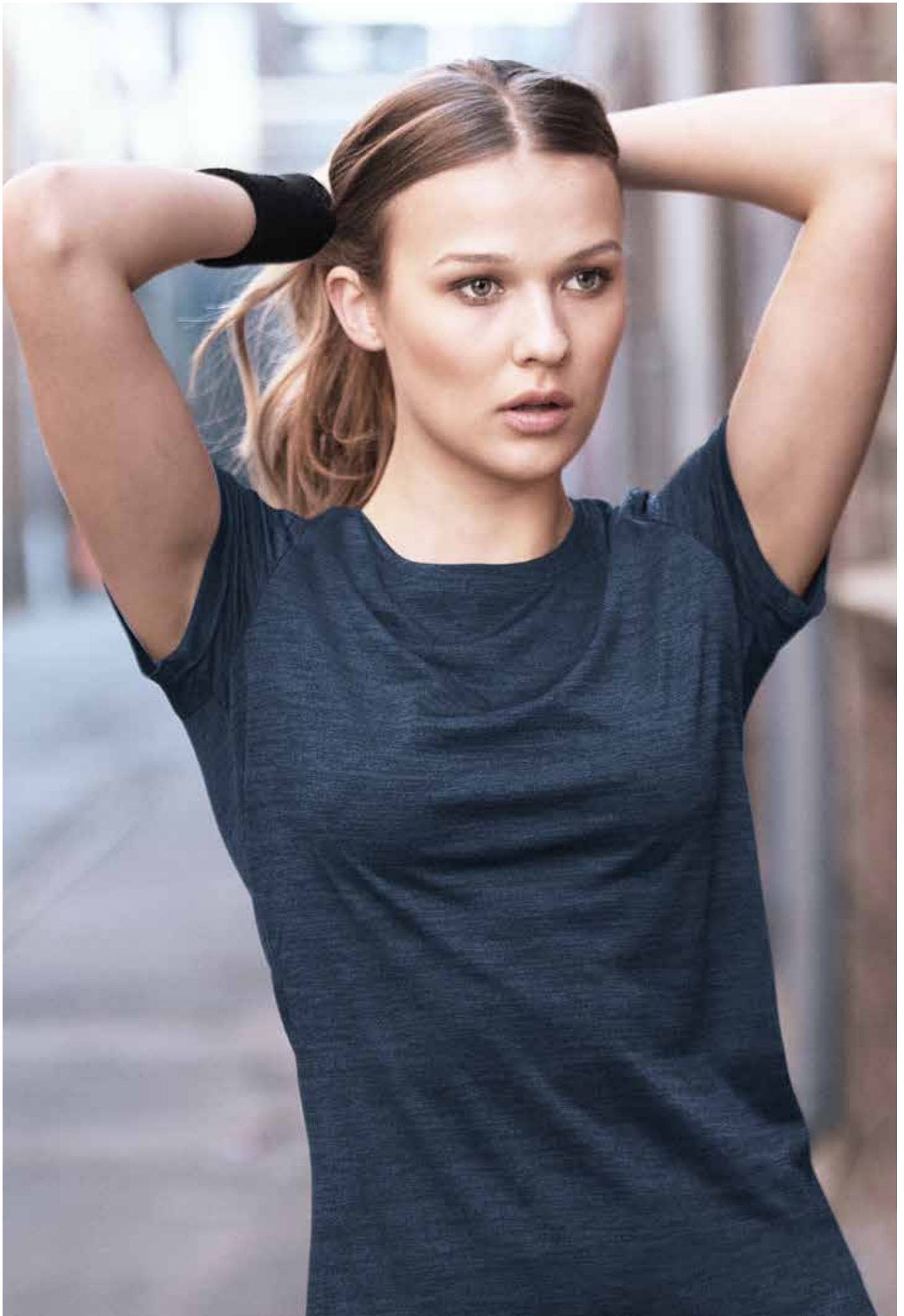
Cotton Touch

MEN: S - M - L - XL - XXL

WOMEN: S - M - L - XL

100% ACTIVE-DRY® polyester; single jersey “cotton touch”

- ✓ FINE AND SMOOTH FABRIC THAT FEELS LIKE REAL COTTON
- ✓ MOISTURE-WICKING AND BREATHABLE
- ✓ NO LABEL IN COLLAR





140 g/m²
Body Fit



Grey Heather



Anthra Heather



Marina Heather

ST8020 MEN & ST8120 WOMEN

Intense Tech

MEN: S - M - L - XL - XXL

WOMEN: S - M - L - XL

100% ACTIVE-DRY® polyester; jacquard

- ✓ BREATHABLE AND QUICK-DRYING
- ✓ HEATHERED LOOK
- ✓ NO LABEL IN COLLAR



125 g/m²
Normal Fit



Grey Heather



Denim Heather



Coral Heather



ST8830 MEN & ST8930 WOMEN

Recycled Sports-T Move

MEN: S - M - L - XL - XXL

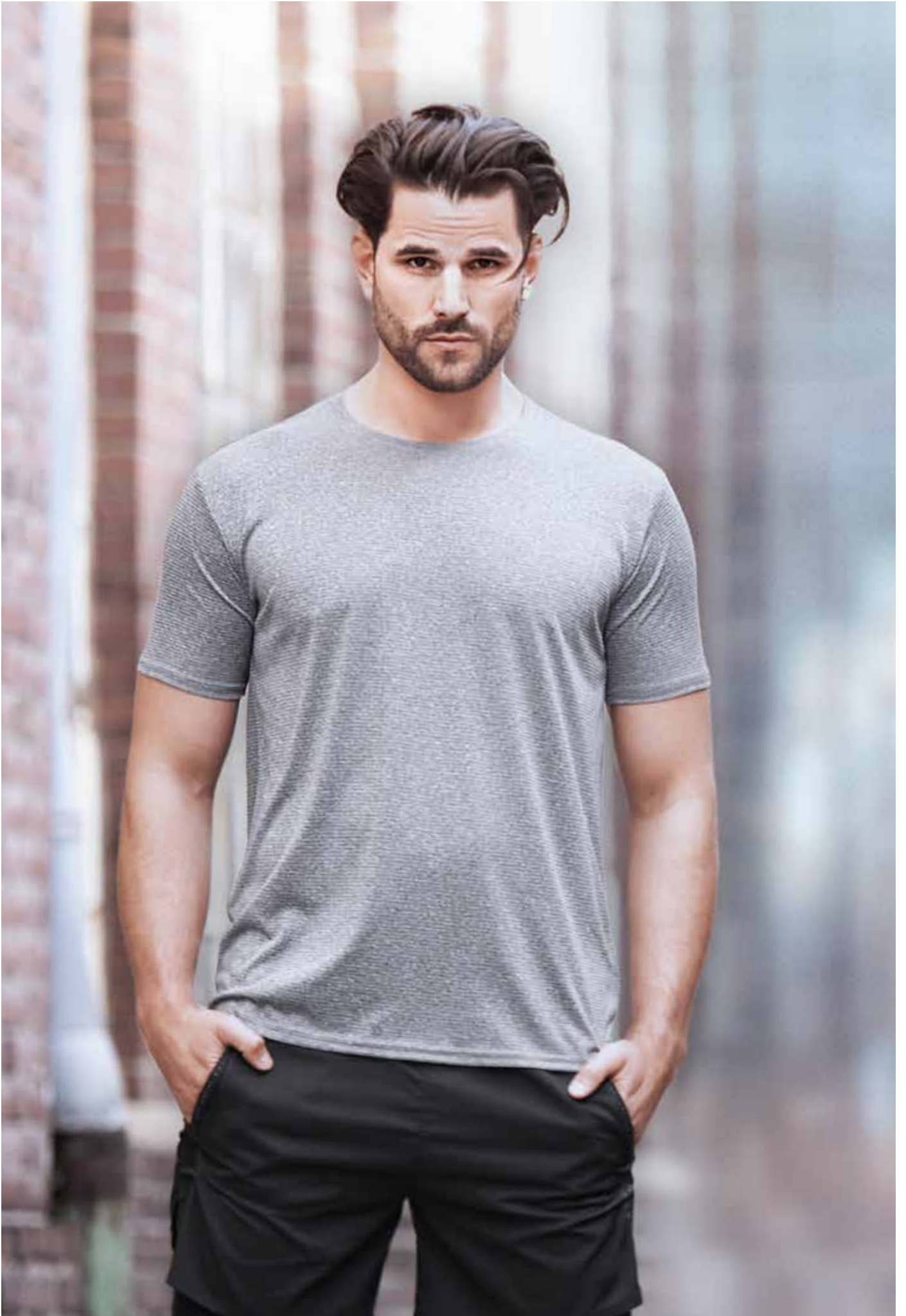
WOMEN: S - M - L - XL

100% ACTIVE-DRY® polyester (50% recycled)

- ✓ ECO-FRIENDLY MATERIAL MADE FROM 4 RECYCLED PLASTIC BOTTLES
- ✓ VERY LIGHT FABRIC WITH HEATHERED LOOK
- ✓ ROUNDED HEM AND OVERCUT SLEEVES FOR WOMEN
- ✓ NO LABEL IN COLLAR
- ✓ TEAR-AWAY LABEL IN SIDE SEAM



RECYCLED



160 g/m²
Body Fit



Grey Heather



Denim Heather



ST8850 MEN & ST8950 WOMEN

Recycled Sports-T Race

MEN: S - M - L - XL - XXL

WOMEN: S - M - L - XL

90% ACTIVE-DRY® polyester (50% recycled), 10% elastane

- ✓ ECO-FRIENDLY MATERIAL MADE FROM 4 RECYCLED PLASTIC BOTTLES
- ✓ VERY STRETCHY AND AIRY MESH FABRIC
- ✓ HEATHERED LOOK WITH CONTRAST ELEMENTS
- ✓ NO LABEL IN COLLAR
- ✓ TEAR-AWAY LABEL IN SIDE SEAM



RECYCLED



190 g/m²
Body Fit



ST8840 MEN & ST8940 WOMEN

Recycled Sports-T Reflect

MEN: S - M - L - XL - XXL

WOMEN: S - M - L - XL

90% ACTIVE-DRY® polyester (50% recycled), 10% elastane

- ✓ ECO-FRIENDLY MATERIAL MADE FROM 4 RECYCLED PLASTIC BOTTLES
- ✓ SUPER SOFT FABRIC WITH GREAT MOISTURE-CONTROL
- ✓ REFLECTING TAPE ON FRONT AND BACK
- ✓ NO LABEL IN COLLAR
- ✓ TEAR-AWAY LABEL IN SIDE SEAM



Grey Heather



Blue Heather

WE HAVE RECYCLED MORE THAN

1.5 MILLION PLASTIC BOTTLES



The process is rather simple. First, the bottles are broken down into small pieces, then those pieces are cleaned and melted into tiny pellets and then they are melted again, filtered and spun into yarn. Later, this yarn can be used for a range of textiles, such as T-shirts, jackets and sweats.



300 g/m²
Normal Fit



ST5840 MEN & ST5940 WOMEN

Recycled Scuba Jacket

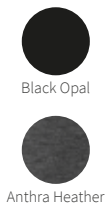
MEN: S - M - L - XL - XXL

WOMEN: XS - S - M - L - XL

Black Opal: 94% polyester (24% recycled), 6% elastane;

Antra Heather: 81% polyester (28% recycled), 13% viscose, 6% elastane

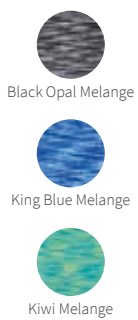
- ✓ ECO-FRIENDLY MATERIAL MADE FROM 8 RECYCLED PLASTIC BOTTLES
- ✓ STRETCHY AND BREATHABLE
- ✓ NO LABEL IN COLLAR
- ✓ TEAR-AWAY LABEL IN SIDE SEAM







140 g/m²
Body Fit



ST8800 MEN & ST8900 WOMEN

Seamless Raglan

MEN: S - M - L - XL - XXL

WOMEN: S - M - L - XL

58% ACTIVE-DRY[®] polyester, 42% nylon; jacquard

- ✓ LIGHT AND STRETCHY FABRIC WITH NYLON
- ✓ RAGLAN SLEEVES
- ✓ BREATHABLE SIDE PANELS
- ✓ QUICK-DRYING AND MOISTURE-WICKING



Black Opal

300 g/m²
Body Fit



Black Opal

300 g/m²
Body Fit

ST8330 WOMEN
Sports Bra

S - M - L - XL

90% nylon, 10% elastane

- ✓ SEAMLESS CONSTRUCTION
- ✓ REMOVABLE CUP PADDING
- ✓ STRETCHY, DOUBLE-LAYER NYLON FABRIC
- ✓ OPTIMUM SUPPORT FOR HIGH-INTENSITY WORKOUTS



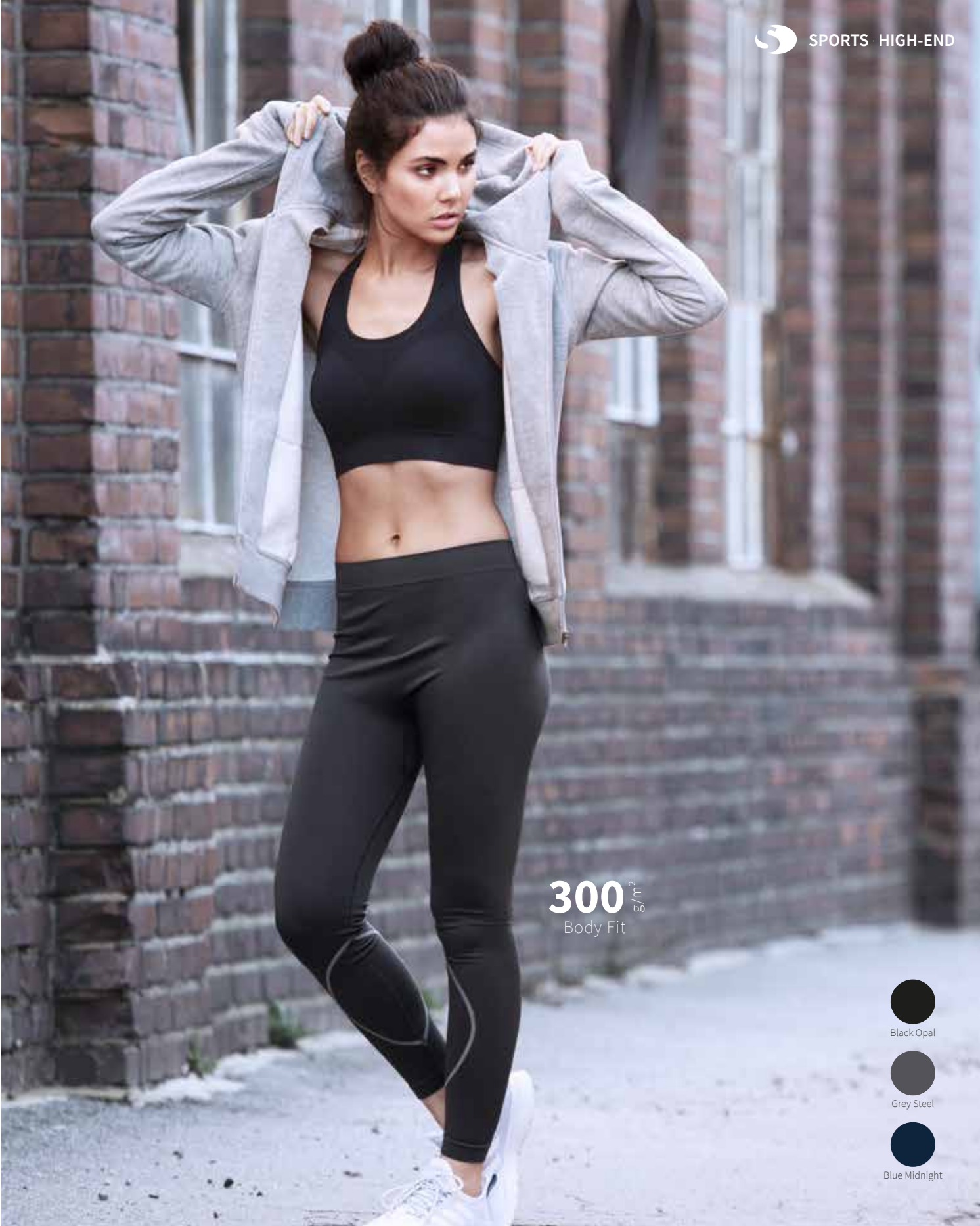
RACERBACK

ST8320 WOMEN
3/4 Sports Tights

S - M - L - XL

90% nylon, 10% elastane

- ✓ STRETCHY AND DURABLE NYLON FABRIC
- ✓ WIDE RIB WAISTBAND
- ✓ SPORTY CONTRAST STRIPES ON THE SIDES



300 g/m²
Body Fit



Black Opal



Grey Steel



Blue Midnight

ST8990 WOMEN
Seamless Tights

S - M - L - XL

82% nylon, 18% elastane

- ✓ DURABLE NYLON FABRIC
- ✓ HIGH ELASTICITY
- ✓ BREATHABLE AND QUICK-DRYING



A vertical, blurred image on the left side of the page showing a dark jacket, possibly leather or a similar material, against a background of vertical wooden planks.

stedman.eu/jackets-fleece

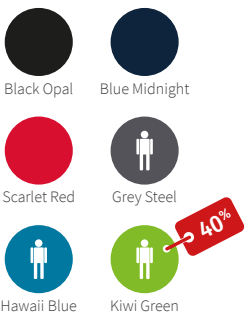
JACKETS & FLEECE

A solid red square located on the right side of the page, partially overlapping the main text area.

An extensive fleece range for extra warmth, padded jackets and vests, Softest Shell jackets as well as modern biker jackets.



220 g/m²
Normal Fit



ST5030 MEN & ST5100 WOMEN
Fleece Jacket

MEN: **S - M - L - XL - XXL - 3XL**
WOMEN: **XS - S - M - L - XL - XXL**

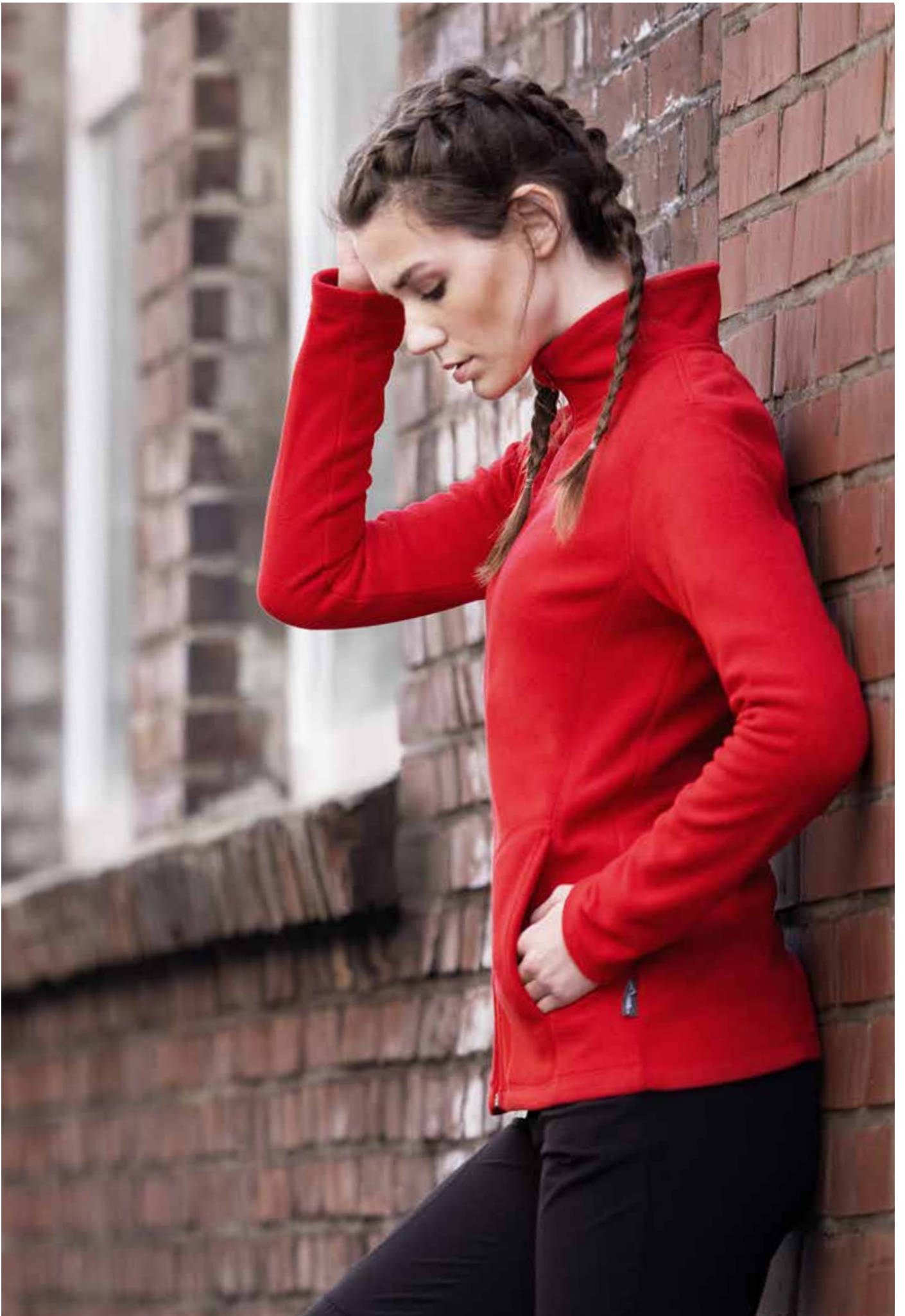
100% polyester; micro fleece with anti-pilling treatment

- ✓ **WARM AND SOFT WITH GREAT HEAT INSULATION**
- ✓ **BOTH SIDES BRUSHED**
- ✓ **NO LABEL IN COLLAR**

Men's size 3XL only in: Black Opal & Blue Midnight · Women's sizes XS & XXL only in: Black Opal, Blue Midnight & Scarlet Red

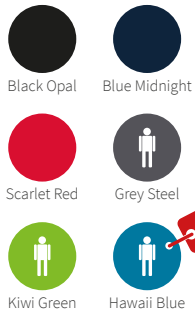


VEST p. 104





220 g/m²
Normal Fit



ST5010 MEN & ST5110 WOMEN
Fleece Vest

MEN: **S - M - L - XL - XXL**
WOMEN: **S - M - L - XL**

100% polyester; micro fleece with anti-pilling treatment

- ✓ **WARM AND SOFT WITH GREAT HEAT INSULATION**
- ✓ **BOTH SIDES BRUSHED**
- ✓ **NO LABEL IN COLLAR**



JACKET p. 102

ST5020 MEN
Fleece Half-Zip

S - M - L - XL - XXL

100% polyester;
micro fleece with anti-pilling treatment

- ✓ LIGHTWEIGHT, WARM AND SOFT
WITH GREAT HEAT INSULATION
- ✓ BRUSHED OUTSIDE
- ✓ NO LABEL IN COLLAR



170 g/m²
Normal Fit



Black Opal



Grey Steel



Scarlet Red

ST5080 MEN
Hooded Fleece Jacket

S - M - L - XL - XXL

100% polyester;
micro fleece with anti-pilling treatment

- ✓ WARM AND SOFT
WITH GREAT HEAT INSULATION
- ✓ BOTH SIDES BRUSHED
- ✓ NO LABEL IN COLLAR



220 g/m²
Normal Fit



Black Opal



Grey Steel



Blue Midnight



280 g/m²
Normal Fit



Grey Steel



Brilliant Blue

ST5090 MEN & ST5190 WOMEN

Striped Fleece Jacket

MEN: S - M - L - XL - XXL

WOMEN: S - M - L - XL

100% polyester; knit fleece with anti-pilling treatment

- ✓ WARM, STRETCHY KNIT FABRIC
- ✓ BRUSHED INSIDE
- ✓ NO LABEL IN COLLAR



280 g/m²
Normal Fit



Light Grey Melange



Dark Grey Melange



Marina Blue Melange



Blue Melange



Purple Melange

ST5850 MEN & ST5950 WOMEN
Knit Fleece Jacket

MEN: S - M - L - XL - XXL

WOMEN: S - M - L - XL

100% polyester; knit fleece with anti-pilling treatment

- ✓ WARM, STRETCHY KNIT FABRIC
- ✓ BRUSHED INSIDE
- ✓ NO LABEL IN COLLAR



Anthra Melange



Pumpkin Melange



Olive Melange

310 g/m²
Normal Fit

ST5060 MEN
Melange Fleece Jacket

S - M - L - XL - XXL

100% polyester;
melange fleece with anti-pilling treatment

- ✓ WARM AND VELVETY FLEECE FABRIC WITH GREAT HEAT INSULATION
- ✓ BOTH SIDES BRUSHED
- ✓ NO LABEL IN COLLAR



280 g/m²
Normal Fit



Grey Heather



Anthra Heather

ST5040 MEN & ST5120 WOMEN

Power Fleece Jacket

MEN: S - M - L - XL - XXL

WOMEN: S - M - L - XL

100% polyester; fleece with anti-pilling treatment

- ✓ **VERY SOFT FABRIC WITH GREAT HEAT INSULATION**
- ✓ **BOTH SIDES BRUSHED**
- ✓ **NO LABEL IN COLLAR**



250 g/m²
Normal Fit



ST5230 MEN & ST5330 WOMEN
Softest Shell Jacket

MEN: S - M - L - XL - XXL
WOMEN: S - M - L - XL

94% polyester, 6% elastane

- ✓ LIGHTWEIGHT, 4-WAY STRETCH MATERIAL
- ✓ WATER-RESISTANT AND WIND REPELLENT
- ✓ ADJUSTABLE HEM AND SLEEVE HEMS
- ✓ NO LABEL IN COLLAR



250 g/m²
Normal Fit



Black Opal



Crimson Red



White

→ 40%

ST5240 MEN & ST5340 WOMEN

Softest Shell Hooded Jacket

MEN: S - M - L - XL - XXL

WOMEN: S - M - L - XL

94% polyester, 6% elastane

- ✓ LIGHTWEIGHT, 4-WAY STRETCH MATERIAL
- ✓ WATER-RESISTANT AND WIND REPELLENT
- ✓ ADJUSTABLE HEM AND SLEEVE HEMS
- ✓ NO LABEL IN COLLAR



Normal Fit



Black Opal

ST5210 MEN & ST5310 WOMEN

Padded Vest

MEN: S - M - L - XL - XXL

WOMEN: S - M - L - XL

shell and lining: 100% nylon; filling: 100% polyester

- ✓ HIGH-QUALITY, DURABLE NYLON
- ✓ WATER-RESISTANT AND WIND REPELLENT
- ✓ EXCELLENT HEAT INSULATION AT LIGHT WEIGHT
- ✓ NO LABEL IN COLLAR



Normal Fit



Black Opal



Dark Blue



Military Green



Bordeaux

ST5200 MEN & ST5300 WOMEN

Padded Jacket

MEN: S - M - L - XL - XXL

WOMEN: S - M - L - XL

shell and lining: 100% nylon; filling: 100% polyester

- ✓ HIGH-QUALITY, DURABLE NYLON
- ✓ WATER-RESISTANT AND WIND REPELLENT
- ✓ EXCELLENT HEAT INSULATION AT LIGHT WEIGHT
- ✓ NO LABEL IN COLLAR





Normal Fit

ST5250 MEN & ST5350 WOMEN

Biker Jacket

MEN: S - M - L - XL - XXL

WOMEN: S - M - L - XL

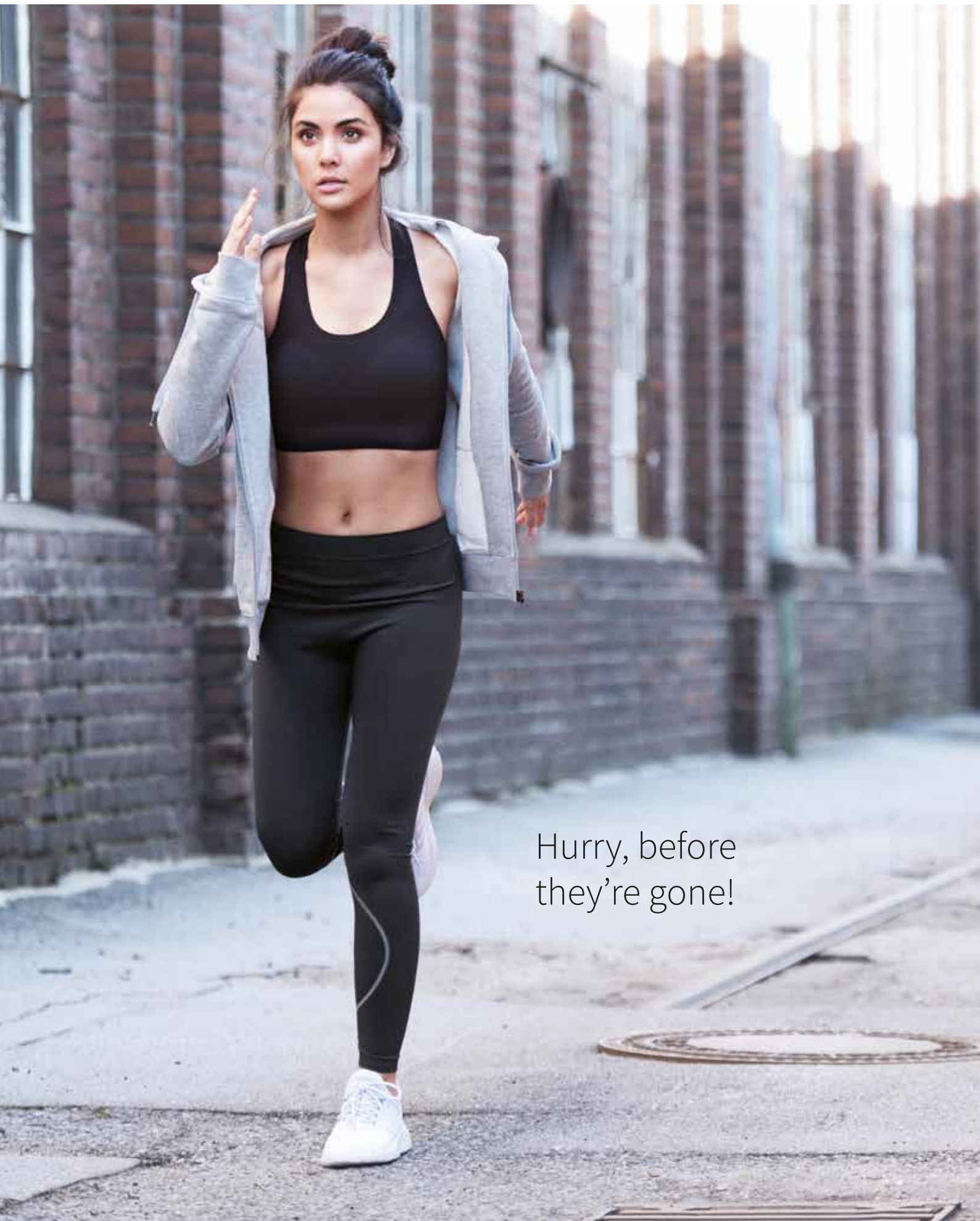
100% leather-look (polyurethane)

- ✓ ANIMAL-FRIENDLY FAUX LEATHER
- ✓ METAL ZIPPERS AND MODERN DETAILS
- ✓ ZIP OPENING IN BACK LINING FOR EASY DECORATION
- ✓ NO LABEL IN COLLAR

{ PETA - APPROVED }
VEGAN



Black Opal



Hurry, before
they're gone!

stedman.eu/lastchance

LAST CHANCE

We offer a **40% discount**
on selected styles and colours:
Hurry and get your “last chance”-
styles while stocks last!
These articles remain part of the
Stedman® collection 2022.

For more information on our discounted
styles please visit our website:

stedman.eu/lastchance



LAST CHANCE

T-shirts made from cotton & organic cotton

40%



White



Black Opal



Powder Blue



Powder Green



Powder Grey



Powder Rose

ST9450 MEN

Shawn Oversized Slub Crew Neck

S - M - L - XL - XXL

100% ring-spun cotton, slub yarn; single jersey

- ✓ SLUB YARN FOR A TEXTURISED LOOK
- ✓ RAW EDGE COLLAR AND OVERSIZED SHAPE
- ✓ NO LABEL IN COLLAR

140 g/m²

Oversized Fit



White



Black Opal



Powder Blue



Powder Green



Powder Grey



Powder Rose

ST9550 WOMEN

Sharon Oversized Slub Crew Neck

S - M - L - XL

100% ring-spun cotton, slub yarn; single jersey

- ✓ SLUB YARN FOR A TEXTURISED LOOK
- ✓ RAW EDGE COLLAR AND OVERSIZED SHAPE
- ✓ NO LABEL IN COLLAR

140 g/m²

Oversized Fit



Hawaii Blue

ST9020 MEN

Morgan Crew Neck

S - M - L - XL

100% ring-spun cotton, single jersey

- ✓ PREMIUM RING-SPUN COTTON
- ✓ BODY-FIT CUT WITH RIB COLLAR
- ✓ SIDE SEAMS
- ✓ NO LABEL IN COLLAR

160 ^{g/m²}

Body Fit



Indian Yellow



Winter White

ST9200 MEN

James Organic Crew Neck

S - M - L - XL - XXL

100% OCS-certified organic ring-spun combed cotton; single jersey

- ✓ ECO-FRIENDLY COMBED COTTON (OCS-CERTIFIED)
- ✓ SIDE SEAMS
- ✓ NO LABEL IN COLLAR



ORGANIC

155 ^{g/m²}

Normal Fit



Earth Green

ST9300 WOMEN

Janet Organic Crew Neck

S - M - L - XL

100% OCS-certified organic ring-spun combed cotton; single jersey

- ✓ ECO-FRIENDLY COMBED COTTON (OCS-CERTIFIED)
- ✓ SIDE SEAMS
- ✓ NO LABEL IN COLLAR



ORGANIC

155 ^{g/m²}

Normal Fit





ST9210 MEN
James Organic V-neck

S - M - L - XL - XXL

100% OCS-certified organic ring-spun combed cotton; single jersey

- ✓ ECO-FRIENDLY COMBED COTTON (OCS-CERTIFIED)
- ✓ RIB COLLAR WITH ELASTANE
- ✓ NO LABEL IN COLLAR



155 g/m²
Normal Fit



ST9310 WOMEN
Janet Organic V-neck

S - M - L - XL

100% OCS-certified organic ring-spun combed cotton; single jersey

- ✓ ECO-FRIENDLY COMBED COTTON (OCS-CERTIFIED)
- ✓ RIB COLLAR WITH ELASTANE
- ✓ NO LABEL IN COLLAR



155 g/m²
Normal Fit



ST9370 CHILDREN
Jamie Organic Kids

S - M - L - XL

100% OCS-certified organic ring-spun combed cotton; single jersey

- ✓ ECO-FRIENDLY COMBED COTTON (OCS-CERTIFIED)
- ✓ SIDE SEAMS
- ✓ NO LABEL IN COLLAR



155 g/m²
Normal Fit



Bordeaux



Powder Blue

ST9600 MEN

Clive Crew Neck

S - M - L - XL

95% ring-spun combed cotton, 5% elastane; single jersey “full feeder”

- ✓ BODY FIT
- ✓ STRETCHY, COMBED COTTON WITH ELASTANE
- ✓ NO LABEL IN COLLAR

170 ^{g/m²}
Body Fit



Powder Blue

ST9700 WOMEN

Claire Crew Neck

S - M - L - XL

95% ring-spun combed cotton, 5% elastane; single jersey “full feeder”

- ✓ BODY FIT
- ✓ STRETCHY, COMBED COTTON WITH ELASTANE
- ✓ NO LABEL IN COLLAR

170 ^{g/m²}
Body Fit



Powder Blue

ST9400 MEN

Shawn Slub Crew Neck

S - M - L - XL - XXL

100% ring-spun cotton, slub yarn; single jersey

- ✓ SLUB YARN FOR A TEXTURISED LOOK
- ✓ SLIM, MODERN COLLAR
- ✓ NO LABEL IN COLLAR

140 ^{g/m²}

Normal Fit



True Blue

ST9500 WOMEN

Sharon Slub Crew Neck

S - M - L - XL

100% ring-spun cotton, slub yarn; single jersey

- ✓ SLUB YARN FOR A TEXTURISED LOOK
- ✓ SLIM, MODERN COLLAR
- ✓ NO LABEL IN COLLAR

140 ^{g/m²}

Normal Fit



True Blue

ST9510 WOMEN

Sharon Slub V-neck

S - M - L - XL

100% ring-spun cotton, slub yarn; single jersey

- ✓ SLUB YARN FOR A TEXTURISED LOOK
- ✓ SLIM, MODERN COLLAR
- ✓ NO LABEL IN COLLAR

140 ^{g/m²}

Normal Fit

LAST CHANCE

Sports wear, fleece jackets & vests

 40%



Dark Grey
Transition



Light Grey
Transition

ST8910 WOMEN

Seamless Raglan Flow

S - M - L - XL

75% nylon, 25% ACTIVE-DRY[®] polyester

- ✓ DURABLE, QUICK-DRYING FABRIC WITH NYLON
- ✓ RAGLAN SLEEVES
- ✓ MULTI-COLOUR GRADIENT PATTERN
- ✓ EXTRA HIGH ELASTICITY

180 ^{g/m²}

Body Fit



Light Grey
Transition

ST8820 MEN

Seamless Jacket

S - M - L - XL

75% nylon, 25% ACTIVE-DRY[®] polyester

- ✓ DURABLE, QUICK-DRYING FABRIC WITH NYLON
- ✓ RAGLAN SLEEVES
- ✓ MULTI-COLOUR GRADIENT PATTERN
- ✓ EXTRA HIGH ELASTICITY

180 ^{g/m²}

Body Fit



Hawaii Blue

ST5010 MEN
Fleece Vest

S - M - L - XL - XXL

100% polyester; micro fleece with anti-pilling treatment

- ✓ WARM AND SOFT WITH GREAT HEAT INSULATION
- ✓ BOTH SIDES BRUSHED
- ✓ NO LABEL IN COLLAR

220 ^{g/m²}
Normal Fit



Kiwi Green

ST5030 MEN
Fleece Jacket

S - M - L - XL - XXL

100% polyester; micro fleece with anti-pilling treatment

- ✓ WARM AND SOFT WITH GREAT HEAT INSULATION
- ✓ BOTH SIDES BRUSHED
- ✓ NO LABEL IN COLLAR

220 ^{g/m²}
Normal Fit



Turquoise

ST5860 MEN
Recycled Fleece Jacket Hero

S - M - L - XL - XXL

100% polyester (60% recycled)

- ✓ ECO-FRIENDLY MATERIAL MADE FROM 16 RECYCLED PLASTIC BOTTLES
- ✓ BRUSHED INSIDE
- ✓ NO LABEL IN COLLAR
- ✓ TEAR-AWAY LABEL IN SIDE SEAM



RECYCLED

210 ^{g/m²}
Normal Fit

LAST CHANCE

Quilted, padded & soft shell jackets

 40%



Black Opal



Military Green

ST5260 MEN

Quilted Jacket

S - M - L - XL - XXL

100% polyester

- ✓ LIGHTWEIGHT DURABLE FABRIC WITH WARM FILLING
- ✓ WATER-RESISTANT AND WIND REPELLENT
- ✓ NO LABEL IN COLLAR

Normal Fit



Black Opal



Military Green

ST5360 WOMEN

Quilted Jacket

S - M - L - XL

100% polyester

- ✓ LIGHTWEIGHT DURABLE FABRIC WITH WARM FILLING
- ✓ WATER-RESISTANT AND WIND REPELLENT
- ✓ NO LABEL IN COLLAR

Normal Fit





Military Green

ST5200 MEN

Padded Jacket

S - M - L - XL - XXL

shell and lining: 100% nylon; filling: 100% polyester

- ✓ HIGH-QUALITY, DURABLE NYLON
- ✓ WATER-RESISTANT AND WIND REPELLENT
- ✓ EXCELLENT HEAT INSULATION AT LIGHT WEIGHT
- ✓ NO LABEL IN COLLAR

Normal Fit



Bordeaux

ST5300 WOMEN

Padded Jacket

S - M - L - XL

shell and lining: 100% nylon; filling: 100% polyester

- ✓ HIGH-QUALITY, DURABLE NYLON
- ✓ WATER-RESISTANT AND WIND REPELLENT
- ✓ EXCELLENT HEAT INSULATION AT LIGHT WEIGHT
- ✓ NO LABEL IN COLLAR

Normal Fit



Dolphin Grey Marina Blue

ST5230 MEN

Softest Shell Jacket

S - M - L - XL - XXL

94% polyester, 6% elastane

- ✓ LIGHTWEIGHT, 4-WAY STRETCH MATERIAL
- ✓ WATER-RESISTANT AND WIND REPELLENT
- ✓ ADJUSTABLE HEM AND SLEEVE HEMS
- ✓ NO LABEL IN COLLAR

250 ^{g/m²}

Normal Fit



Dolphin Grey Marina Blue

ST5330 WOMEN

Softest Shell Jacket

S - M - L - XL

94% polyester, 6% elastane

- ✓ LIGHTWEIGHT, 4-WAY STRETCH MATERIAL
- ✓ WATER-RESISTANT AND WIND REPELLENT
- ✓ ADJUSTABLE HEM AND SLEEVE HEMS
- ✓ NO LABEL IN COLLAR

250 ^{g/m²}

Normal Fit



White

ST5240 MEN

Softest Shell Hooded Jacket

S - M - L - XL - XXL

94% polyester, 6% elastane

- ✓ LIGHTWEIGHT, 4-WAY STRETCH MATERIAL
- ✓ WATER-RESISTANT AND WIND REPELLENT
- ✓ ADJUSTABLE HEM AND SLEEVE HEMS
- ✓ NO LABEL IN COLLAR

250 ^{g/m²}

Normal Fit

stedman.eu/fabrics

FABRICS

High-quality fabrics with unique properties and a great wearing comfort.

For production reasons, the colours of the fabric swatches may differ from those of the actual products.

RING-SPUN COTTON Cotton is a soft, absorbent and breathable natural fibre, making it the perfect choice for clothing worn close to the skin. T-shirts made of cotton fabric are very airy, durable and easy to clean. For our cotton styles, we only use high-quality ring-spun cotton. Ring-spun yarn is made by twisting and thinning the cotton strands to make a very fine, strong, soft rope of cotton fibres. Ring-spun cotton T-shirts are significantly softer, more durable and last longer than their regular counterparts.



ORGANIC COTTON Organic cotton is grown without the use of pesticides, herbicides or other chemical fertilizers and is therefore particularly gentle on people and nature. Our organic styles are made of 100% OCS-certified organic ring-spun cotton. Environmentally friendly, fashionable and absolutely soft on the skin. These styles offer all the advantages of a classic promotional T-shirt and at the same time the good feeling of having made a small contribution to environmental protection.



VISCOSE Viscose is a high-quality material made from the natural raw material cellulose. The fibre is very soft to the touch, moisture-absorbent and very breathable. It can be both glossy and matt and thus take on the look of wool, silk or cotton. T-shirts with a viscose share drape fluidly around your body, creating a premium wearing comfort as well as an elegant, flattering silhouette.



ELASTANE Elastane is a durable, highly elastic material that returns to its original shape after each stretch. For our Stedman[®] collection we use the “full feeder” technology, allowing elastane to evenly spread over the entire surface of the fabric. This leads to a high wearing comfort and a smooth surface that is excellent for printing.



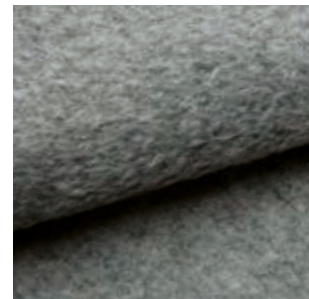
RECYCLED POLYESTER Our recycled polyester offers the same high-quality characteristics as conventional polyester but with a smaller environmental footprint. The production of recycled polyester requires far less energy, causes significantly less CO₂ emissions, and helps keeping plastic waste from going to landfills and our oceans. In the Stedman® collection you can find recycled polyester in sports shirts, sports jackets, sweatshirts, sweatpants and fleece jackets.



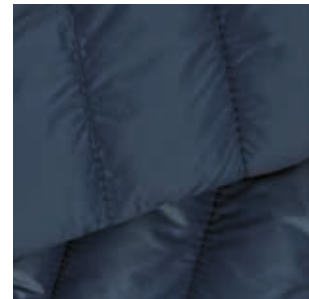
ACTIVE-DRY° POLYESTER Stedman®'s ACTIVE-DRY° polyester is a quick-drying fabric with great moisture-control that is soft to the touch and very elastic. Therefore it is perfectly suitable for sports and functional clothing. The airy fabrics are very moisture-wicking and provide a pleasant feeling even during intensive workouts. T-shirts made of ACTIVE-DRY° polyester offer not only great wearing comfort, but also ideal conditions for various textile finishings.



FLEECE Fleece jackets are popular and indispensable companions in everyday life or for outdoor activities, as they provide strong insulation and can absorb and release moisture very well. They are light, breathable and keep you pleasantly warm even in cooler weather. There are many different kinds of fleece fabrics. The Stedman® collection includes Micro Fleece, Knit Fleece, Melange Fleece and Power Fleece.



NYLON Nylon fabrics are smooth, moisture-wicking and very durable, making them the perfect choice for athletic and outdoor clothing. Nylon is one of the lightest textile fibres and at the same time one of the strongest. Thanks to its high elasticity and moisture-wicking properties, nylon textiles offer great wearing comfort and excellent freedom of movement. In the Stedman® collection you can find nylon in sports shirts, sports tights, sports bras, padded jackets and vests.



POLYURETHANE (LEATHER LOOK) Polyurethane fabrics are durable and abrasion-resistant, yet soft, light and breathable. As such, they are used to create more comfortable and sophisticated weatherproof clothing that is even washable at 40°C. Thanks to the high-quality polyurethane, our Biker Jackets do not only look like leather, but also have similar stretch, stiffness and permeability properties like genuine leather jackets.



SOFTEST SHELL The outstanding properties of our Softest Shell styles are their low weight and the combination of two layers of clothing in one. Softest Shell combines an outer layer to protect against wind and weather with an inner mesh layer. Thus, Softest Shell products are wind-, water- and dirt-repellent. The pleasantly elastic material ensures a high level of wearing comfort.

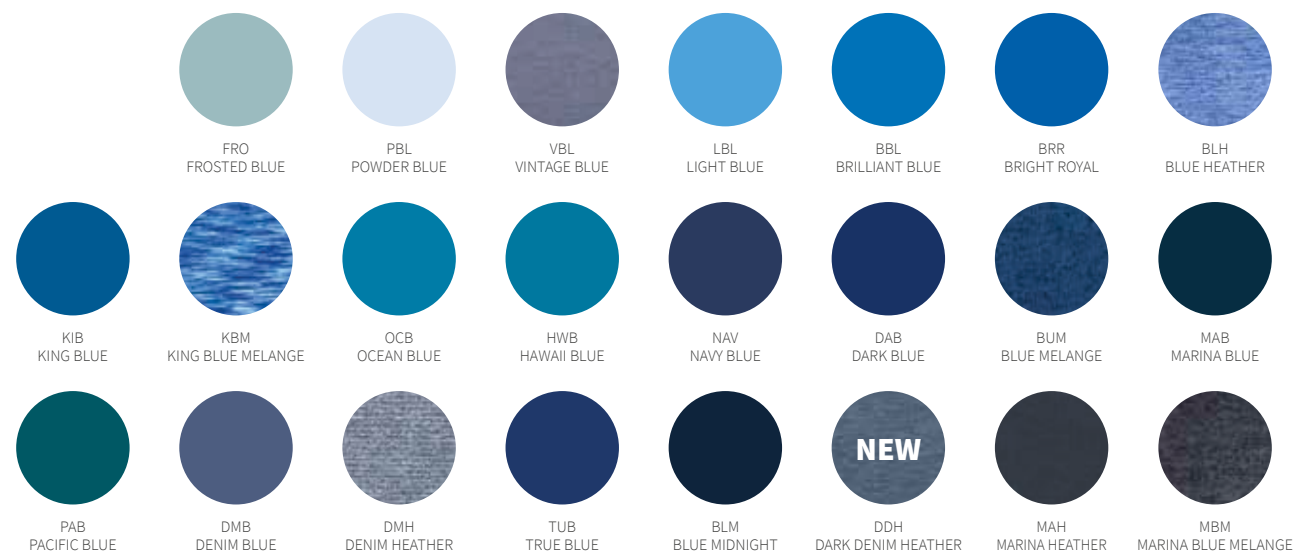
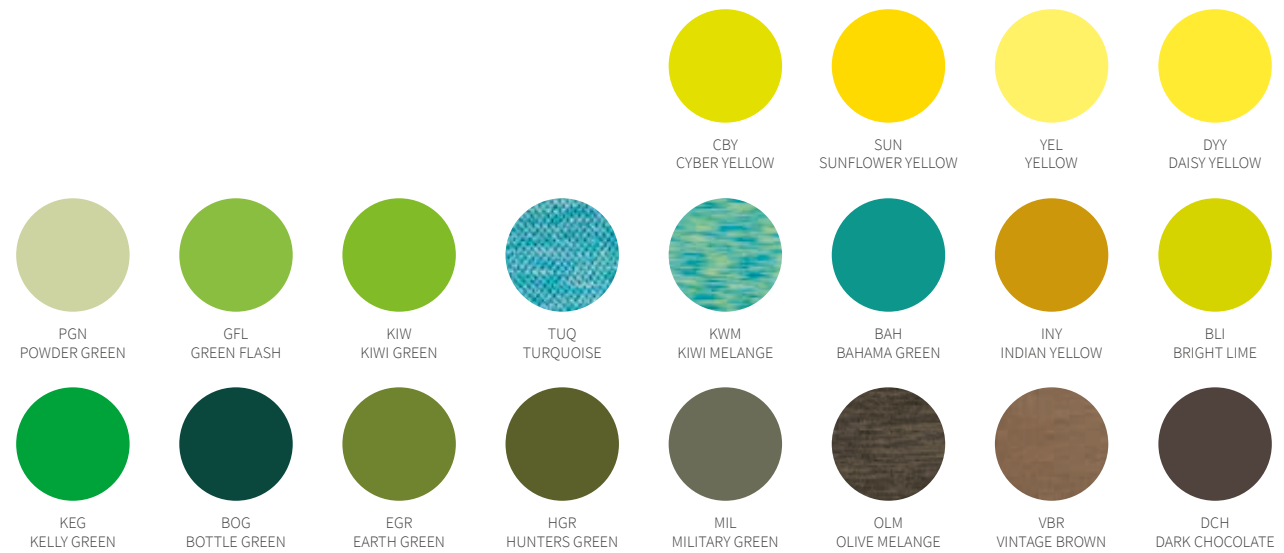


stedman.eu

COLOURS

To easily sort all products by colour, please go to **stedman.eu**





stedman.eu/size-charts

SIZES



The stated sizes are subject to standard tolerances and have only been stated for orientation purposes. Some articles possess a tighter cut to emphasize the shape of the body (indicated as 'Body Fit' in product descriptions). Please order one size larger if you require a looser fit. All sizes are 'to fit' sizes.

MEN

EU	DE,FR,ES,PT		IT	UK	BODY HEIGHT		CHEST		WAIST		HIPS	
					cm	inches	cm	inches	cm	inches	cm	inches
XS	42-44		32-34	32-34	172-175	67.5-69	78-85	30.5-33.5	66-73	26-28.5	84-88	33-34.5
S	44-46	34-36	34-36	34-36	173-182	68-71.5	86-93	34-36.5	74-81	29-32	92-96	36-38
M	48-50	38-40	38-40	38-40	175-184	69-72.5	94-99	37-39	82-89	32.5-35	100-104	39.5-41
L	52-54	42-44	42-44	42-44	177-186	69.5-73	100-105	39.5-41.5	90-97	35.5-38	105-110	41.5-43.5
XL	56-58	46-48	46-48	46-48	179-188	70.5-74	106-111	41.5-43.5	98-105	38.5-41.5	111-116	43.5-45.5
XXL	60-62	50-52	50-52	50-52	181-190	71.5-75	112-117	44-46	106-113	41.5-44.5	117-122	46-48
3XL	64-66	54-56	54-56	54-56	185-191	73-75	118-123	46.5-48.5	114-121	45-47.5	123-128	48.5-50.5
4XL	68-70	58-60	58-60	58-60	185-191	73-75	124-129	49-51	122-129	48-51	129-132	51-52
5XL	72	62	62	62	185-191	73-75	130-135	51-53	130-135	51-53	133-138	52.5-54.5

WOMEN

EU	DE	FR, ES, PT		IT	UK	BODY HEIGHT		CHEST		WAIST		HIPS	
						cm	inches	cm	inches	cm	inches	cm	inches
XS	32-34	34-36	36-38	6-8	165-172	65-67.5	74-84	29-33	58-65	23-25.5	85-90	33.5-35.5	
S	36-38	38-40	40-42	10-12	165-172	65-67.5	85-92	33.5-36	66-73	26-28.5	91-96	36-38	
M	40-42	42-44	44-46	14-16	165-172	65-67.5	93-97	36.5-38	74-81	29-32	97-102	38-40	
L	44-46	46-48	48-50	18-20	165-172	65-67.5	98-107	38.5-42	82-90	32.5-35.5	103-110	40.5-43.5	
XL	48-50	50-52	52-54	22-24	165-172	65-67.5	108-117	42.5-46	91-102	36-40	111-118	43.5-46.5	
XXL	50-52	52-54	54-56	24-26	165-172	65-67.5	118-123	46.5-48.5	103-114	40.5-45	119-124	47-49	
3XL	54-56	56-58	58-60	28-30	165-172	65-67.5	124-134	49-53	115-126	45.5-49.5	125-135	49-53	
4XL	58-60	60-62	62-64	32-34	165-172	65-67.5	135-145	53-57	127-136	50-53.5	136-146	53.5-57.5	

CHILDREN

EU	AGE	BODY HEIGHT		CHEST		WAIST		HIPS	
		cm	inches	cm	inches	cm	inches	cm	inches
3XS	1-2	86-92	34-36	53-54	21-21.5	49-52	19.5-20.5	52-56	20.5-22
XXS	3-4	98-104	38.5-41	55-56	21.5-22	52-53	20.5-21	57-60	22.5-23.5
XS	5-6	110-116	43.5-45.5	57-58	22.5-23	54-55	21.5	61-63	24-25
S	7-8	122-128	48-50.5	61-64	24-25	56.5-58	22-23	66-69	26-27
M	9-10	134-140	53-55	67-70	26.5-27.5	59-61	23-24	72-75	28.5-29.5
L	11-12	146-152	57.5-60	73-76	28.5-30	62-65	24.5-25.5	78-81	30.5-32
XL	12-13	158-164	62-64.5	79-82	31-32.5	65-69	25.5-27	85-87	33.5-34.5

UNISEX

EU	DE		FR, ES, PT		IT		UK	
	WOMEN	MEN	WOMEN	MEN	WOMEN	MEN	WOMEN	MEN
XXS	32-34	-	34-36	-	36-38	-	6-8	-
XS	36-38	42-44	38-40	42-44	40-42	30-32	10-12	30-32
S	40-42	44-46	42-44	44-46	44-46	34-36	14-16	34-36
M	44-46	48-50	46-48	48-50	48-50	38-40	18-20	38-40
L	48-50	52-54	50-52	52-54	52-54	42-44	22-24	42-44
XL	50-52	56-58	52-54	56-58	54-56	46-48	24-26	46-48
XXL	54-56	60-62	56-58	60-62	58-60	50-52	28-30	50-52
3XL	58-60	64-66	60-62	64-66	62-64	54-56	32-34	54-56
4XL	-	68-70	-	68-70	-	58-60	-	58-60
5XL	-	72	-	72	-	62	-	62

stedman.eu/printability

PRINT & EMBROIDERY

When it comes to our garments, style, function and comfort are not the only things that matter to us. We pay particular attention to the most diverse methods of printability so that your various decoration techniques can be applied to our products in outstanding quality.

Our fabrics offer an even and smooth surface, which enables an optimal printing result.

To meet the highest demands, we are constantly working to adapt our products to the latest printing techniques.

To do this, we test each and every product together

with our print test team. To continuously optimise our products, we are constantly looking for printability testers.

You are welcome to join our print test team. Simply fill out the registration form at:

stedman.eu/print-tester





Transfer

With all transfer techniques, the design is applied to a carrier and then pressed onto the textile. Under transfer we have summarised various types of finished transfers (Aqua, Nylon...) as well as Flex, Flock & Sublimation.

► Here a smooth surface is needed for pressing, which is why we recommend all our products except fleece & quilted or padded jackets and vests.

Sublimation printing

In sublimation printing, a special ink is used that turns into gas when heat is applied and can thereby be absorbed into the fibres of the textile. Sublimation printing offers particularly long durability and a high-quality feel.

► A polyester layer is required for this, which is why we can recommend all our polyester sports shirts. As sublimation printing does not provide sufficient opacity on dark textiles, we only recommend light colours for sublimation.



Direct printing

DTG (direct to garment) printing is one of the latest printing techniques and is becoming increasingly popular in the textile printing industry. The design is applied directly to the textile fabric using an inkjet process and is then fixed using heat.

► We recommend DTG on 100% cotton, our popular cotton-elastane shirts and on all our sweat products.



Embroidery

Embroidery with needle and thread can be a finishing option for almost all textiles.

► We can especially recommend all our jackets, whether fleece, softshell, imitation leather or nylon. But also our sweat products are perfect for embroidery. In general, we can recommend all fabrics that weigh more than 145 g/m².



Screen printing

Screen printing is the most widely used printing process in the promotional textile industry. Here, the printing ink is pressed through a stencil onto the textile. We divide screen printing into 3 types:

Plastisol screen printing

The most popular colours in textile screen printing are plastisol colours. The advantages of plastisol inks are, among other things, their high opacity, long durability after numerous washings and the implementation of special colours.

► Plastisol printing requires a smooth surface, so we recommend all our products except fleece & quilted or padded articles.

Water-based screen printing

The big advantage of this printing technique is the feel. Prints with water-based screen printing ink are very smooth. After washing the printed shirt you will hardly feel any difference between the printed and the unprinted area.

► We recommend this environmentally friendly and water-based screen printing on 100% cotton, our popular cotton-elastane shirts and on all our sweat products.

Discharge

For discharge printing, the ink is mixed with a bleaching agent, which brightens the colour of the textile. Due to the brightened material, the ink has a higher opacity and the printing layer can be kept very thin. Discharge printing offers a particularly high-quality feel, as the ink is hardly noticeable.

► The discharge process requires the same fabric compositions as water-based screen printing, but not every colour is suitable.

For more information on print & embroidery please visit our website:

stedman.eu/printability



stedman.eu/complete-collection

INDEX

The Stedman[®] collection 2022 by article number.
New styles are highlighted in blue.



Men

ST2000 Classic-T	28
ST2010 Classic-T Fitted	32
ST2020 Classic-T Organic	30
ST2100 Comfort-T 185	35
ST2130 Comfort-T 185 Long Sleeve	52
ST2300 Classic-T V-neck	48
ST2500 Classic-T Long Sleeve	52
ST2800 Classic Tank Top	50
ST2810 Tank Top	51
ST3000 Polo	58
ST3400 Polo Long Sleeve	59
ST4000 Sweatshirt Classic	67
ST4100 Sweat Hoodie Classic	69
ST4200 Sweat Hoodie Light	68
ST5010 Fleece Vest	104 (125)
ST5020 Fleece Half-Zip	105
ST5030 Fleece Jacket	102 (125)
ST5040 Power Fleece Jacket	109
ST5060 Melange Fleece Jacket	108
ST5080 Hooded Fleece Jacket	105
ST5090 Striped Fleece Jacket	106
ST5200 Padded Jacket	113 (128)
ST5210 Padded Vest	112
ST5230 Softest Shell Jacket	110 (129)
ST5240 Softest Shell Hooded Jacket	111 (129)
ST5250 Biker Jacket	115
ST5260 Quilted Jacket	(126)
ST5600 Sweat Hoodie Select	74
ST5610 Sweat Jacket Select	75
ST5620 Sweatshirt Select	66
ST5630 Recycled Sweat Hoodie	70
ST5650 Recycled Sweatpants	73
ST5840 Recycled Scuba Jacket	95
ST5850 Knit Fleece Jacket	107
ST5860 Recycled Fleece Jacket Hero	(125)
ST7000 Lux	25
ST8000 Sports-T	78
ST8010 Sports Top	80
ST8020 Intense Tech	89
ST8030 Active 140 Team Raglan	83
ST8050 Piqué Polo	81
ST8400 Active 140 Crew Neck	85
ST8410 Active 140 Raglan	84
ST8420 Active 140 Long Sleeve	86
ST8440 Active 140 Sleeveless	82
ST8450 Active 140 Polo	86
ST8600 Cotton Touch	87
ST8800 Seamless Raglan	97
ST8820 Seamless Jacket	(124)
ST8830 Recycled Sports-T Move	90

ST8840 Recycled Sports-T Reflect	93
ST8850 Recycled Sports-T Race	92
ST9000 Ben Crew Neck	38
ST9010 Ben V-neck	46
ST9020 Morgan Crew Neck	39 (119)
ST9040 Morgan Long Sleeve	53
ST9050 Henry Polo	60
ST9060 Harper Polo	61
ST9080 Knit Long Sleeve	54
ST9100 Finest Cotton-T	40
ST9200 James Organic Crew Neck	33 (119)
ST9210 James Organic V-neck	(121)
ST9220 Slub Organic	43
ST9400 Shawn Slub Crew Neck	41 (123)
ST9410 Shawn Slub V-neck	49
ST9430 Shawn Henley T-shirt	42
ST9450 Shawn Oversized Slub	(118)
ST9460 Shawn Henley Long Sleeve	56
ST9600 Clive Crew Neck	37 (122)
ST9610 Clive V-neck	47
ST9620 Clive Long Sleeve	55
ST9630 Clive Relaxed	36
ST9690 Dean Deep V-neck	45
ST9691 Dexter Boxers	63
ST9692 Dexter Briefs	63
ST9850 David Oversized	44

Women

ST2000 Classic-T	28
ST2020 Classic-T Organic	30
ST2160 Comfort-T 185	35
ST2600 Classic-T Fitted	29
ST2620 Classic-T Organic Fitted	31
ST2700 Classic-T V-neck	48
ST2900 Classic Tank Top	50
ST3100 Polo	58
ST4000 Sweatshirt Classic	67
ST4110 Sweat Hoodie Classic	69
ST4200 Sweat Hoodie Light	68
ST5100 Fleece Jacket	102
ST5110 Fleece Vest	104
ST5120 Power Fleece Jacket	109
ST5190 Striped Fleece Jacket	106
ST5300 Padded Jacket	113 (128)
ST5310 Padded Vest	112
ST5330 Softest Shell Jacket	110 (129)
ST5340 Softest Shell Hooded Jacket	111
ST5350 Biker Jacket	115
ST5360 Quilted Jacket	(126)

... Women

ST5600 Sweat Hoodie Select	74
ST5630 Recycled Sweat Hoodie	70
ST5650 Recycled Sweatpants	73
ST5710 Sweat Jacket Select	75
ST5940 Recycled Scuba Jacket	95
ST5950 Knit Fleece Jacket	107
ST7000 Lux	25
ST7600 Lux Fitted	27
ST8100 Sports-T	78
ST8110 Sports Top	80
ST8120 Intense Tech	89
ST8130 Active 140 Team Raglan	83
ST8320 3/4 Sports Tights	98
ST8330 Sports Bra	98
ST8500 Active 140 Raglan	84
ST8540 Active 140 Tank	82
ST8700 Cotton Touch	87
ST8900 Seamless Raglan	97
ST8910 Seamless Raglan Flow	(124)
ST8930 Recycled Sports-T Move	90
ST8940 Recycled Sports-T Reflect	93
ST8950 Recycled Sports-T Race	92
ST8990 Seamless Tights	99
ST9110 Finest Cotton-T	40
ST9120 Megan Crew Neck	39
ST9130 Megan V-neck	46
ST9150 Hanna Polo	61
ST9180 Knit Long Sleeve	54
ST9300 Janet Organic Crew Neck	33 (119)
ST9310 Janet Organic V-neck	(121)
ST9320 Slub Organic	43
ST9500 Sharon Slub Crew Neck	41 (123)
ST9510 Sharon Slub V-neck	49 (123)
ST9530 Sharon Henley T-shirt	42
ST9550 Sharon Oversized Slub	(118)
ST9580 Sharon Henley Long Sleeve	56
ST9700 Claire Crew Neck	37 (122)
ST9710 Claire V-neck	47
ST9720 Claire V-neck Long Sleeve	55
ST9730 Claire Relaxed	36
ST9950 Daisy Oversized	44

Children

ST2200 Classic-T Kids	29
ST2220 Classic-T Organic Kids	31
ST3200 Polo Kids	59
ST8170 Sports-T Kids	79
ST8570 Active 140 Raglan Kids	85
ST9370 Jamie Organic Kids	(121)

You can **download** the digital Stedman® catalogue, colour card, product sheets and more at: stedman.eu/tools



For the production of this catalogue we have chosen **sustainable printing**:



The PEFC Council (Programme for the Endorsement of Forest Certification schemes) is an independent, non-profit, nongovernmental organization, founded in 1999 which promotes sustainably managed forests through independent third party certification. The PEFC provides an assurance mechanism to purchasers of wood and paper products that they are promoting the sustainable management of forests.